

Romsey Golf Club

Ladies report

Apologies to our readers—I missed last month so a longer report this time.

The golfing season has commenced with Lorraine and Jan traveling to Trentham on March 5th for their Captain and President's Day, where they played Canadian and enjoyed the day. Hilda and Jan went to Alexander on March 17th for the Dalhousie Player of the Year presentation and played 4BBB in the heat prior to the presentations. They combined well on the day and scored 37 points. Lorraine and I went to the Irish 4's at Gisborne two days later and were teamed with 2 Gisborne ladies, winning the day with 88 points.

Hilda, Lorraine and I have played in the Kilmore Bowl, and Lorraine and I took Jan to the Alexandra Bowl. Kilmore was cold and blowy with low scores posted from the whole field. Alexandra as usual had their tricky greens but the weather was better and the golf more enjoyable.

At Romsey we are in the process of renumbering the holes to make the course longer and increase the par and course rating. It is an interesting exercise with some difficult decisions to be made. We have trialed several layouts and are about to make a final decision. More information next report.

Results for the last two months:

March 5: Stroke 9 holes D.Baker 49 (25/12.5) 36.5 net
March 12: Stableford 18 holes 1st: L. Robb (38) 38pts.

9 holes 1st: J. Casey (45/22.5) 18 pts.

March 19: Canadian 18 holes J. Harver & H. Biggs (45) 117 72

9 holes J. Dodds & J. Casey (45/22.5) 66 23.5

March 19: 9 Hole winner K. Jekabsons (31) 32.5

April 2: Stroke 9 Hole winner K. Jekabsons (31) 36.5

April 9: Par 18 Hole winner L. Robb (38) +6

9 Hole winner J. Casey T45 -4

April 16: Stroke Monthly Medal 18 Hole winner L. Robb (38) 72 net.

We have welcomed 3 new ladies to our club and wish them all good golfing. We hope you continue to enjoy the game. If anyone else is interested in having a go to see if you may like to play golf, please just come along on a Wednesday morning at 9.00am to the club rooms. Let me know in advance if you are left handed and need to borrow clubs.

On April 20th we had 30 juniors participating in a lesson with a professional from Kyneton, as a result of a grant from the Victorian Golf Foundation. Thank you to all the school principals in the area for publicizing the lessons in their school newsletters.

Relay For Life

The Romsey Birdies, consisting of current and past lady golfers from Romsey, enjoyed the relay and have decided to enter a team again next year. The day started with the Survivors' lap, followed by a teams lap. Despite our team being depleted by members being on holiday, or having family and work commitments, we managed to keep the baton going for the whole time. We would like to thank our sponsors for their support of our team and the Cancer Council of Victoria.

Recipe for the Month:

Two Step Sponge

4 eggs
3/4 cup caster sugar
1/2 cup custard powder
1/2 cup corn flour
1 teaspoon cream of tartar
1/2 teaspoon bi-carb of soda

Beat eggs and sugar for 12 minutes
Sift dry ingredients 3 times and fold in.
Grease 2 x 8 inch tins (high sides)
Bake at 180C for 15-20 minutes.

THE ROMSEY RAG

Issue No. 259

2000 copies produced each month at Romsey Primary School as a service to our community
and proudly supported by the Macedon Ranges Shire Council

MAY 2008

THE MAY EDITION OF THE ROMSEY RAG IS PROUDLY BROUGHT TO YOU BY
- The Romsey Community Hub -

The Romsey Community Hub

Main Street, Romsey—at the site of the old Shire offices
and the old Post office

- Library
- Macedon Ranges Shire Council Services
- Romsey Community House
- Toy Library
- Playgroup
- Cobaw Community Health Consulting Room
- Meeting Rooms for Hire

Opens on May 12th

Opening hours for the library and the Council desk will be:

Monday—Friday 9.30am—5.00pm (Except Thursdays—closes at 6.00pm)

Saturday—9.30am—12.30pm (Library only)

Council services will include VicRoads (Learner's permits and log books only), payments (rates, animal registrations etc), lodgement of documents and applications, general information, tourist information.

Looking forward to a new era in Romsey

The closing date for copy for the June Romsey Rag is **Friday, May 23rd, 2008.**

We cannot guarantee inclusion of copy received after this date.

Please email your copy to the Romsey Rag email address: romseyrag@romseyps.vic.edu.au

When submitting graphics, please use a Jpeg format, as we cannot guarantee that we can open or print other formats. Also, ensure that text is in a format that can be edited.

Hesket Primary School

Our plant sale is back on with our new major plant suppliers, Chris & Maree's (Hello, Hello). So no need to go to Melbourne or Bendigo - come around the corner to our lovely setting at Hesket Primary School, located half way between Woodend and Romsey on the Romsey Rd, Hesket.



Plant Sale

Sunday 4th May 2008, 10 am till 4 pm

Get something for mum!! (Mothers day 11th May 2008)

Autumn is the best time to establish plants in your garden and we'd like to show off our small school and offer quality plants, devonshire teas, cakes, CFA BBQ, face painting, stalls and more.

Stall holders wanted - please contact the school on 5427 0330 or Jacky on 5427 0576 / 0417722575

Editorially Speaking

Romsey Rag Editorial Committee:
Joan Gibbs, Robyn Moore

Layout and Design:
Robyn Moore, Anne Cappler

Printing:
Robyn Moore

Advertising /Sponsorship:
Christie Brown—5429 5099 or Romsey Post Office

Collation Team Co-ordinator:
Joan Sparkes—5429 5848

Contributions:
Articles should be left at the Romsey Post Office (fax 5429 5134) or Romsey Primary School (fax 5429 5765) by 12 noon of the 21st of each month (or last business day prior to the 21st).

We prefer articles to be submitted electronically or on disc. Legible typed or handwritten items may be accepted. All material submitted for publication must be named and have contact details.

Articles can be sent via e-mail to: romseyrag@romseyps.vic.edu.au

Please ensure that any text is sent as word documents and logos / photos are sent as .jpg files.

Views expressed are not necessarily those of the Editorial Committee. All contributions remain the responsibility of the author.

Advertising:
Rates are GST inclusive.
Front page sponsorship:
\$130 per half page
Business card: \$25 per issue
\$200 per year in Business Directory
Quarter page: \$50 per issue
Half page: \$100 per issue
Full page: \$180 per issue
Line ads: eg- For sale, births, deaths, marriages, engagements - \$10
For invoicing please include name & address details
Cheques must be made payable to Romsey Primary School Station Street, ROMSEY 3434

Distribution:
2000 copies delivered to the Romsey community at the commencement of each month.



Macdon Ranges Shire Council - Generous supporters of the Romsey Rag

Romsey Rag Publication Deadlines 2008

Edition	Closing date for copy	Collating date
June 2008	Friday May 23rd	Thursday May 29th
July 2008	Friday June 20th	Thursday June 26th
August 2008	Friday July 25th	Thursday July 31st
September 2008	Friday August 22nd	Thursday August 28th
October 2008	Friday September 19th	Thursday September 25th
November 2008	Friday October 24th	Thursday October 30th
December 2008	Friday November 21st	Thursday November 27th

From The Rag Team

Thank you to the people who responded to our recent call for additional volunteers to help out with the Rag. We look forward to welcoming a number of new people to the crew in various roles—copy setting, printing and collating. We still need more people for the collating team. With just a few it takes many hours, but with lots it is a short and enjoyable task. So give it some thought—if you can spare even an hour on one Thursday morning a month (see dates above) we would love to see you! Just come along to the Romsey Primary School front desk and ask to be directed to the Romsey Rag collating team.

ROMSEY LIONS CLUB SUNDAY MARKET— 4th SUNDAY OF THE MONTH

The next Romsey Market will be held on Sunday May 25th.
New stall holders are always welcome. Enquiries: 0438-414-245

Please note there is no market in January, June or July.

Mail Service Update

Our article last month regarding the decline in the reliability of mail deliveries in Romsey certainly drew a very large and vigorous response from readers with details of their personal experiences. Thank you to those people who have been in touch by mail, email, phone and in person. We have had the following response from Australia Post:

“Dear Editors,
We were most concerned to read in the Romsey Rag the suggestion that residents have been expressing concerns regarding the reliability of the mail delivery service in Romsey.

New mail delivery contractors started delivering the mail in Romsey in February and, as with any of our delivery staff who take over a new delivery round, they have been learning the local peculiarities. I would like to assure all residents that the new contractors are doing their utmost to provide the people of Romsey with the best service possible, and we would be more than happy to investigate any issues that are brought to the attention of the Romsey Rag.

While all Australia Post Mail Contractors are assisted and mentored during their first weeks to maintain service levels, we still encourage all residents in Romsey to make sure that correspondents are using their correct address and that their street number is prominently displayed on their letterbox. This makes their job a little bit easier and helps them to deliver the mail as efficiently as possible. Please be assured that Australia Post is committed to providing the residents of Romsey with an efficient and secure postal service. And certainly, if anyone is experiencing mail delays or misdelivery, please call our Customer Contact Centre on 13 13 18 to let us know.”

The Rag would like to monitor this situation, so please keep us informed if the situation remains unchanged, gets worse or improves.

- The Editors.

WOODEND WINTER ARTS FESTIVAL World-class chamber music in the Macedon Ranges QUEEN'S BIRTHDAY WEEKEND 6 - 9 June 2008

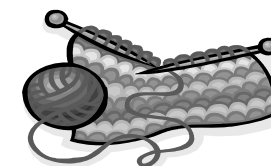
The Woodend Winter Arts Festival is a unique celebration of the arts presented each year in the picturesque township of Woodend over the Queen's Birthday weekend. The festival showcases music — classical music from the Renaissance to the present day and jazz — and contains strong literary and visual arts components held in intimate historical venues over the long weekend.

Musical highlights of this year's Woodend Winter Arts Festival include Marco da Gagliano's 1608 opera *Dafne*, Prokofiev's *Peter and the Wolf*, featuring **Max Gillies** and the Scotch College Orchestra, and jazz great **James Morrison** in concert.

General public enquiries should be directed to
www.woodendwinterartsfestival.org.au

Romsey Art and Craft Market Market Dates

2008
SUNDAY
May 11th
June 15th
July 13th
August 10th
September 14th
October 12th
November 16th
December 14th
At Romsey Mechanics Hall



LANCEFIELD FRUIT SHED

Opening hours: Monday to Friday 9am—5pm
Saturday 9.00am—1.00pm.

99% Australian grown produce, good quality, fresh from the market daily.

Home delivery available Eftpos available

Shop local & save!

Phone 5429 1969 Fax 5429 1167



Romsey Gas Supplies

Is your local Distributor for



54295023

ROMSEY / LANCEFIELD SENIOR CITIZENS

Meet each Monday.

Come and enjoy lunch, a game of cards, indoor bowls or just a chat with a very friendly group of people.

Bus trips arranged each month.
For details, please ring Rae Hooke on 54291602.

Romsey Primary School News

New Principal

At the beginning of this term I was privileged to take over as Principal of Romsey Primary School. I am lucky to inherit a school that is already in excellent condition. We have an outstanding team of dedicated teachers, quality support staff and a wonderful group of students committed to learning. With the numerous garden awards our grounds are continuously improving. I have been working at Romsey Primary School for just over 11 years, first as a Leading Teacher and then Assistant Principal. So I already know the students well and many parents. I will continue to look forward to knowing more parents and developing stronger links with the community. Please feel welcome to call into the office to introduce yourself or find out more about the school. This year we are completing our school self evaluation, followed by the Strategic Plan. This is like a four year plan for the ongoing improvement of our school

Joan Gibbs

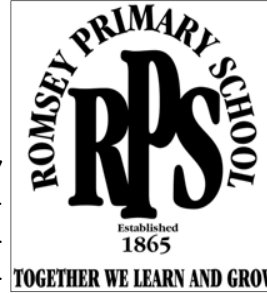
Fresh Fruit Friday

A new government initiative this year is the introduction of 'Fresh Fruit Friday' for Years Prep, 1 and 2. The school has received funding for this program and appreciates the support of local business Romsey Fresh. This program is based on the philosophy of offering children a wide variety of fresh, seasonal fruit and vegetables to influence healthy food choices. On behalf of the school I would like to thank Romsey Fresh for being the supplier for this project and for the beautiful presentation of the platters.



School Council

Recently our School Council held their Annual General meeting. The office bearers are Dr Jenny Stillman, President, Jamie Emond Vice President, Anthony Quigley Treasurer and Vanessa Meredith Secretary. Other parent members of School Council are Paul Mitchell, Kerri Mewett, Kirteen Milne, Anne Cappler, Julie Jedwab and Louise Noel. Teacher representatives are Glenys Petran, Doug Scale, Dianne Craig and Amy Green. We would like to express our sincere appreciation to retiring members Peter Newell, John Fryer and Steve Westbury. Though retiring from School Council Steve Westbury will continue to serve as a co-opted member of the Facilities Subcommittee. At our next meeting on Wednesday the 14th May we will be having an open meeting to consult with the school community during the process of self evaluation and the development of the Strategic Plan, plan of improvement for the next four years.



Learning in the Community

Last term our Prep Unit visited the Ambulance and Police Station, the fruit shop, the chemist and the local veterinarian clinic. Recently the Middle Unit visited the Fire Station, the Police Station and the Ambulance Station. We would like to thank all the people who helped deepen our students understandings of the services available in our local community.

Macedon Ranges Walk Together

The journey starts with one step!

Would you like to walk easier?

Is it hard to walk any distance?

Do you have to park close to the shops you need?

Do you limit your activities because of walking limits?

If you would like to start in a slow steady manner, in your time and at your own pace consider the Discover Walks Suitable for walking frames, sticks, disabled, and low-level fitness individuals.

These are circuit walks available for 30 minutes. You can walk for 5 minutes and then sit down and rest, or for the 30 minutes. The best part is that you are with other people and chat and laugh as you pass each other or walk together and chat.

Finish with a chat and a cuppa

In Romsey there is a combined Discover Walking /Puff N Sweat Group

Up to 30 mins/Puff N Sweat

Leesa- 5420 7458

Monday

1.00pm

Out side Circuit

Community Garage sale

Bolinda, Monegetta fire station

Sunday 25th May 9:00am

Gather up your unwanted items, old books, out grown clothes, old tools and collectables, etc.

\$10.00 a stall,

food and drinks available

Should be a fun day. 😊

**Any inquiries phone:
Gary on 0437001178**

KIDZ UNPLUGGED

A music program for parents and children aged 0-5 years, incorporating movement to music, dance, singing and instrument play led by a trained music teacher.

KIDZ UNPLUGGED is a community service non profit music program that includes movement to music, dance, singing and instrument play in an exciting environment that enables children to explore and enjoy a wide range of musical experiences. Participation with other children provides a social environment that helps children develop self-confidence and positive self-esteem.

Parent participation enables mums, dads or carers to incorporate many of these activities into the children's play and daily routines such as bath time, packing up time and sleep time.

All sessions are followed by morning tea where children and parents can meet new people or chat among friends.

This program is currently being successfully run in Sunbury, Gisborne and Riddells Creek and we would like to start a morning group in Romsey in July this year. The music activities last for 45 minutes, followed by morning tea for the adults and children.

Fees may be paid in advance per term with a discount, or on a weekly basis. Discounted fees are applicable for Health Card holders.

Term fees are 1 child \$7 per session, 2 children \$10 per session and 3 or more children \$12 per session. Health Card holders pay \$5 for 1 child, \$7 for 2 children and \$10 for 3 or more children.

Weekly fees are 1 child \$10, 2 children \$15 and 3 or more children \$18. Health Card holders weekly fees are 1 child \$7, 2 children \$9 and 3 or more children \$12.

EXPRESSIONS OF INTEREST REQUIRED

The program would be held in the Uniting Church Hall in Pohlman Street, Romsey and is organised through Uniting Care Orana Family Services. We need to have expressions of interest from families interested in attending, so we can make plans to get this community program happening.

Everyone is welcome and there would be volunteers in attendance to help. Please call Jenny Elliott on 5427 0230 for further information or to register your interest as soon as possible. Messages may be left on this number if no-one is in attendance.



John Smith
0408 704 082

Your agent for
Romsey, Lancefield
and surrounding
districts.

THINKING OF SELLING?

Residential and Rural Properties of all shapes and sizes are needed right now!

We have buyers currently looking to purchase in our area and we need more properties to sell.

For a free no-obligation appraisal of your property call us now!



www.connallys.com.au

ROMSEY 5429 6842

Service and professionalism is our motto

DOG CLIP- PING & GROOMING

**ALL BREEDS –
REASONABLE
RATES**

**PICK UP AND
DELIVERY
AVAILABLE**

**Pauline:
5429 6918**

Romsey Lancefield Girl Guides

We are well into Term 2 activities, the girls having chosen badges to work on, a sleepover, and lots of other fun activities. The girls are working on the Safety badge, which involves being aware of safety around our homes, especially in the kitchen, bathroom and laundry. They will also consider possible dangers outside in the garage or garden shed. Then there is road safety, in particular safety around schools, and getting on and off buses safely.



ANZAC Day has come and gone for another year and the Guides were there in full uniform, marching alongside Scouts and Cub Scouts early on Friday morning. The girls had great fun making the wreath they laid at the War Memorial in Lancefield.

A special badge and set of challenges has been created to begin the celebrations of 100 Years of Guiding. This Girls Guiding The Way project is an advocacy training project which will offer opportunities to all Girl Guides to explore the topic of advocacy and women's rights in a FUN and EXCITING way. Each month between May and November there is a special theme and all Guide Units are asked to run an activity on that theme, sometime in the month. This month we are Celebrating Mothers in May. The girls will invite their Mum, or Gran, to Guides and we will have games and activities that celebrate Mums and daughters.

Later in the month the girls are going to cook on fires, have a Teddy Bear's picnic, hold a bring-a-friend night, and hold a sleepover. There are opportunities to go on camp later in the year too. There is a Wizard Express camp in July, Fun Force Jamborella in October, and our own Science Fun camp in Term 3.

Are you interested in joining us? We meet Monday evenings at Lancefield Park from 5.00pm to 6.30pm. Ring Rita on 5429 1996 if you would like more details.

ROMSEY LICENSED POST OFFICE

OFFERS THE FOLLOWING
SERVICES:

**BILL PAYING
FAX SERVICE
PHOTOCOPYING
LAMINATING
OPTUS PRE-PAID
PHONE CARDS
TELSTRA PHONEAWAY
TELSTRA PRE-PAID
PHONE CARDS
PASSPORT APPLICATIONS
OFFICE STATIONERY
CITILINK DAY PASSES
COMPUTER DISKS
COMMONWEALTH,
NATIONAL &
GIROPOST BANKING**



From Cr Henry Bleeck

The Macedon Ranges winery district has been left off a key map which shows the premier wine-growing areas of Australia – and we're not happy about it! The National Wine Centre of Australia has a major display of the wine districts at its Adelaide centre, and the large table-sized map of Australia has left a blank where we should be.

I was recently part of a delegation with Portree Vineyard owner Ken Murchison showing a group of Chinese wine industry investors around some key wine areas. Our study tour included wineries around Nagambie, the Yarra Valley, across to the Barossa and down to Tasmania to see wineries in the Tamar Valley District. It was after visiting the Barossa that we called in to the National Wine Centre of Australia, which is now part of the University of Adelaide.

If the National Wine Centre puts itself forward as an organisation that promotes Australian wines and winegrowing, it's not acceptable that one of Victoria's premier wine-growing areas has been left off its map of wine districts of Australia.

I noted that it lists Sunbury, Daylesford and Seymour as among its 65 wine districts of Australia – but in my view the quality coming from these areas is not a patch on some of the award-winning vineyards and labels we have in the Macedon Ranges region, including Glen Erin, Kilchurn, Curly Flat, Granite Hills, Portree, Hanging Rock and such. I've asked the Council to write on behalf of our community to the National Wine Centre, and get it to put Macedon Ranges on the map as a matter of utmost urgency.

It was an insult and embarrassment to us to show our study group this national map without the Macedon Ranges listed on it, when we all know that we are one of the premier districts turning out a wonderful range of fine wines and should be up near the top of the list of 65. How many other people are visiting this centre and coming away without knowing that some of the finest wines of Australia are being produced right here in the Macedon Ranges?

Push to expand local community radio

Kyneton's very own community radio, 3CH Kyneton, could soon be picked up loud and clear across the Eastern Ward. The Australian Communications & Media Authority is proposing to extend the licence area of 3CH to service our communities and the whole Macedon Ranges Shire. At present it broadcasts to a very localised area. The ACMA is proposing to move the transmitter to a new site at Mount Macedon and extend the licence area to encompass the entire Shire, including Romsey and surrounds.

Romsey roadworks

Roadworks will soon start on the service road on the west side of the Melbourne-Lancefield Rd, from Murphy St to Lions Reserve. The work will provide sealed vehicle and pedestrian access for visitors to the facilities at Lions Reserve. The contract is now being finalised, and works are expected to be completed by the end of June.

Henry Bleeck.

Your Local Macedon Ranges Shire Councillor.

TENDER

LANCEFIELD CEMETERY TRUST

Invitations to tender for the sale of the galvanized mesh paneled fence at the front of the cemetery are sought. The 203 metre long fence is comprised of 68 panels, posts and panel mounting bolts, plus 4 double gates and 1 single gate.

- All tenders must be in writing.
- Verbal tenders will not be accepted.
- Tenders must not be lodged by facsimile or e-mail.
- Tenders must be submitted to the office of:
Maureen P. Wiltshire Family Law Solicitor
75 Main Street, Romsey 3434.
By Friday 23rd May at 4.00pm.
- The Trust is not bound to accept the highest or any tender.
- The successful tenderer will be notified in writing of the acceptance of its tender.

For more details contact Robert Green, phone 5429 1392.

FOR SALE

All purpose leather saddle 15in GC \$145-
Bridle, show cob size black with pelham bit \$55-
Canvas rug 6ft 2in (185cm)\$25-
Wool rug 6ft(180cm) \$25-
Work boots \$12-
Float boots \$7-
Bandages \$5- ono
54296805/0408179491

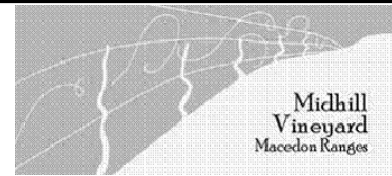
FOR SALE

BUDGIES

BABY OR ADULT
1 BREEDING COUPLE
ALL COLORS

CALL MICHAEL ON 54296895
WEEKDAYS AFTER 4:30 PM
WEEKENDS 11 AM - 6 PM





Midhill cellar door

**Open 24 - 25 May
as part of the
Lancefield & Romsey
Vintage Showcase.**

Midhill Vineyard invites you to come and taste our awardwinning wines MACEDON Sparkling +4 years on lees, Chardonnays (wooded & unwooded), Gewürztraminer and Pinot Noir.

Visit our rustic cellar door as part of a trip around your local wineries and celebrate with us the completion of a successful vintage.

**We are located on Romsey's doorstep,
at 1727 Romsey Road, ROMSEY**
Just 2 km west of Romsey on the road to Woodend.

With 7 other Lancefield & Romsey wineries, all within 10 km of Lancefield, we will be open over the 2 days, 11 AM - 5 PM, for tastings and wine sales.

The Macedon Ranges Region produces the very best of the distinctive cool climate wines for which our region has become famous.

For more information on your wine region, visit
www.macedonrangeswine.com.au

MorganField Vineyard and Cellar Door

A rustic and relaxing cellar door offers a little taste of Europe at MorganField.

We have promised premium wines and have delivered on quality at a reasonable price to wine enthusiasts who simply know a good wine when they trial it for themselves.

Apart from capturing the attention of wine writers and judges, James Halliday, Lester Jesberg and Nick Bullied, our cool climate wines are created for all to enjoy.

Our cellar door offers cheese and antipasto platters, gourmet pies and other light lunch options.

Open on weekends and public holidays between 11 am and 5 pm or by appointment.

Details: 104 Ashworths Road Lancefield VIC 3435

Ph: **03 5429 1157**

Web: www.morganfield.com.au

Email: info@morganfield.com.au



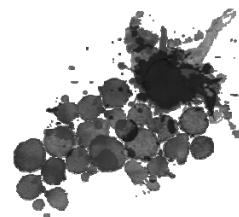
Lancefield & Romsey Winemakers

Cellar doors open 24 & 25 May

Autumn has come, the grapes are off, wine is in the barrel and the **Winemakers of Lancefield and Romsey** can relax, a bit!! At least 'til pruning starts. Though by and large a modest lot, they do like to show off now and again. So that's what they're doing over the weekend of May 24 and 25. They are celebrating an outstanding vintage and you are all invited. Eight Lancefield and Romsey vineyards will be opening their cellar doors, putting on a bit of an act and generally enjoying themselves at their **2008 Vintage Showcase**.

So who are these guys and how do we get in on the act? Well, for a start you don't have to wait for the weekend; there will also be dinners featuring their wines at "Soltan Pepper", Friday 23rd May and Saturday 24th May. Then at the weekend there will be hospitality to be had at the cellar doors, several of which are opening for this special occasion. If you are coming from Romsey, you can start with Hew and Di Richards at **Midhill** on the Woodend Road, then on to **Braewattie** and **Curly Flat** at Rochford, on to Lancefield to **Farrawell** and **MorganField** and out to Mt William to visit **Portree**, **Lane's End** and **Mt William Winery**. You will find Gold Medal and Trophy winning wines at all of them, and yes, they did take off 8 of the 9 Trophies awarded at last year's Macedon Ranges Wine Exhibition.

They truly are a "**Limited Edition**".



**MACEDON
RANGES WINES**

Limited Edition

From Joanne Duncan—State Member for Macedon. Concessions and Rebates to help you keep warm this winter

Dear Friends

With the winter months fast approaching, I thought you may be interested in a few concessions and rebates available to help you keep warm this winter.

A **Winter Energy Concession** is available between May 1st and October 31st for Pension Card, Health Care Card and three different types of Veterans' Affairs cardholders (All conditions, War Widow and TPI cardholders). All you have to do is present your valid card when paying your energy bills at any Australia Post outlet, or notify your energy company when paying your bill over the telephone or via the internet.

If you use LPG, non-mains electricity or an alternative fuel such as heating oil, you also may be eligible for a **Non-Mains Winter Energy Concession**. Pension Card, Health Care Card or Department of Veterans' Affairs Gold card holders are eligible for a rebate if you spend at least \$82 on LPG, oil or non-mains electricity between May 1st and October 31st.

And if you are having trouble paying your energy bills, please notify your energy provider who can let you know of the payment options available to you.

There are also many rebates available from Sustainability Victoria which will help you save money and energy.

A **Solar Hot Water Rebate** will be available from 1 July 2008 to help cover the costs of shifting from gas or electric hot water systems to solar hot water systems. Solar energy is highly efficient and cheap to run over time. A rebate of up to \$2500 will be available to rural and regional Victorians.

If you are planning to renovate, you may be interested in the **Insulation Rebate** program. Ceiling insulation reduces the amount of heat lost, and can result in large savings on your annual heating bills. Rebates are available through participating suppliers and installers of insulation. Conditions do apply, and a list of suppliers and installers is available from Sustainability Victoria.

If you would like more information about concessions, please telephone the Concessions Information Line on 1800 658 521, and for rebates information, please telephone Sustainability Victoria on 1300 366 195, or telephone my office on 5428 2138.

Warm regards,

JOANNE DUNCAN MP
State Member for Macedon

WE NEED YOU

- **Do you have a skill you would like to share?**
- **Are you a trainer who could run some courses?**
- **What is your hobby / past-time that someone else might be interested in?**

The Romsey Community House is now in the process of planning its second semester program, to be run from our exciting new permanent venue at the Romsey Community Hub. We would love to hear from anyone who would be interested in providing activity programs on an on-going or once off basis. Don't worry about how different or unusual your offering may be—there might well be a need in our community for what you have to offer.

Romsey Kindergarten Inc.

P.O. Box 84
ROMSEY, VIC. 3434
Phone: Unit 1 (03) 5429 5294
Unit 2 (03) 5429 6076



KINDER CORNER ROMSEY KINDERGARTEN NEWS

With renewed excitement, the new term has begun with teachers, parents and children embracing the theme of autumn at Romsey Kindergarten. A relatively long term lies ahead, with much activity planned within the kindergarten programs and by the Committee of Management. Although we would all appreciate some rain, the fine weather has meant that the teachers have been able to utilize their outdoor areas probably more than usual for this time of the year. The children enjoy outdoor activity immensely and it is a very important part of the "learning through play" philosophy of preschool education. An outdoor play area which maximizes this potential was the brief given to Mary Jeavons Landscape Architects who have prepared the concept plans for the future develop-



ment of the Kindergarten's playground areas. Variable surface textures, secret gardens, water features and digging patches are just some of the features in the plans which incorporated input from our teachers. Such a project is, understandably, a

major one which local fundraising will only partially support. Romsey Kindergarten Inc. has applied for a large Renovation and Refurbishment Grant under the State Government's capital works funding scheme for children's centres. The success of this application will be known in June. If unsuccessful, then a staged development under the concept plan will occur.

Relationships

Supportive relationships are always important, especially when applying for project grants. Macedon Ranges Shire Council's Family and Children's Services department, Romsey Playgroup, Romsey Primary School and the Romsey Neighborhood House have been very supportive of this major grant application. Likewise, Romsey Kindergarten has given written support to the Shire's application for a very large infrastructure grant to be invested on children's services across the Shire.

Kindergarten Management Review

Last year, Committee of Management undertook a management review study to evaluate our current system of management (that is, independent parent committee) and compare it to other systems (Council cluster, independent cluster managers, school-affiliated etc). A preliminary forum to present the review findings was held in December. A second forum will be held in May (at this stage, **Tuesday 13th May at 7.30pm** at the Kindergarten) to further discuss "the way forward". A panel consisting of representatives from kindergarten management groups and early childhood educators will participate. The restructuring of early childhood education management at state government level seems to be moving at quite a rapid

pace since Mr. Brumby's formation of the Department of Education and Early Childhood Development last year. It is very important, therefore, that such a management review takes into account this development with the end goal being to provide a best practice early childhood education experience for our children. Please contact Jenny Stillman (0412-349849) if you have any queries about the Forum.

Is Your Child Ready For School?

On **Wednesday 7th May** at 7pm, Romsey Kindergarten will host a presentation from the prep transition team at Romsey Primary School discussing the often vexed issue of school readiness. The teachers will be available for questions after the presentation, with babysitting and supper provided by the Kindergarten. Please contact **Karren Baker** on 54 295099 if you have any queries.



Emergency Care Course

On Saturday 12th April, the Kindergarten hosted a paediatric emergency care course provided by the EmergCare group. This was primarily organized for the benefit of our teaching staff and their ongoing professional development, but was open to all interested parties with final attendance numbers exceeding original expectations. It was certainly a worthwhile exercise for all involved.

Mother's Day

The Kindergarten children are busily preparing gifts as this very special day approaches. As usual, it will be celebrated in the 4 year old classes with a morning/afternoon tea on **Wednesday 7th May** for mums, grandmas or other special ladies. Watch out for a photo report in next month's Romsey Rag!

New Photocopier

The Kindergarten has recently upgraded to a photocopier which can scan documents to our computer as well as perform regular photocopying functions. The previous Lanier LD 118d black and white photocopier is available FOR SALE at \$500. It has a current service history (last serviced in March '08), document feeder, duplex function and is in full working order. Please phone **Raelene Mottram** on 54 296272 if you would like further information.

Jenny Stillman (0412-349849)
President, Committee of Management

ROMSEY TRENCHING & HORSE SHELTERS

ROMSEY TRENCHING &

FUNDRAISING & COMMUNITY GRANTS WORKSHOP—UPDATE

Wednesday 14 May 2008

Macedon Ranges Shire
Council

Further information?
Community Development
Department
www.macedon-
ranges.vic.gov.au

Kyneton Town Hall
Ph: 5422 0247
Fax: 5422 3623

PO Box 151
Kyneton Vic 3444

Participating Organisations

~
Macedon Ranges Shire
Council
~
Foundation for Rural &
Regional Renewal
~
Dept of Planning & Community
Development
~

Proudly Sponsored by



Community Governance Training Workshops 2008

Fundraising & Community Grants

The session will cover topics including:

- Sponsorship and Community Grants—RegionalOne Credit Union
- Community Funding Scheme—Macedon Ranges Shire Council
- State Government Small Grants—Dept of Planning & Community Development
- Philanthropic Organisations, Trusts & Foundations, Taxation Status—Foundation for Rural and Regional Renewal

When: Wednesday 14 May 2008

Where: Kyneton Town Hall

Time: 6.30pm to 7pm (Refreshments)

7pm to 9pm (Workshop)

RSVP for catering:

Tuesday 6 May 2008

Gerard Feain

5422 0247 or 0400 573 279

g.feain@macedon-ranges.vic.gov.au

Romsey Uniting Church

Pohlman Street, Romsey. 3434

Minister Avril Hannah-Jones: 5429 5351 Mobile: 0408 380 962

Church Council Chairperson: Noel Shaw - 5429 5509
Secretary: Jeni Clampit - 5429 5480



You are most welcome to come to the Romsey Uniting Church Services and share in fellowship and

May 4th – The Romsey morning service will commence at 10.30am. This will be followed by the Congregation AGM. Then we will be joining with Uniting Church congregations all over Australia in having a BBQ Lunch to raise money for NCYC (National Christian Youth Convention) for 2009. The money raised will either help local delegates attend or the hiring of a major events venue in Melbourne.

Week of Prayer for Christian Unity – May 4th – 11th. During this week the Romsey Uniting Church will be open on Thursday 8th May from 1pm- 3pm. In 2008 the Week of Prayer for Christian Unity marks 100 years since the first 'Prayer Octave for Christian Unity' began in 1908. These 8 days leading up to Pentecost are a great opportunity to renew and deepen our relationships in the one God in whom we share in Jesus Christ. The theme appropriately is **'Pray without ceasing'**.

Meditation:

An African Christian from Angola was describing the damage war had done to a mission station. The mission bungalow had been destroyed, he said, but the honeysuckle was still there in the garden....

It touched me. The brick and concrete building, built so strongly and with such hope, was now a heap of rubble. The plant, vulnerable and delicate, somehow had survived. And continued to perfume the air.

When the things we humans build are gone, nature continues. Grows and blossoms. Fills the air with scent. Fills the eyes with beauty. Reminds us how persistent life is. And tells us again how patient God is. It's a parable of hope. Our best efforts and plans may be shattered by violence, as people struggle for power and advantage. Anger explodes, but when the guns have moved on, there in the rubble of pain and anguish, God begins again. Pulls life together. Gives us another chance.

One day, perhaps, we'll take it, and the smell of honeysuckle will push out the smell of fear. Then we shall be whose again, and through us the fragrance of Christ will spread abroad, intangible but indestructible.

*Lord, it's a bit insubstantial, honeysuckle against explosive. Love against hate.
Forgiveness against violence.
And yet it's your way.*

*A way of patience, suffering, and vulnerability.
It's hard.*

*I like the theory, but when it comes to living, then I reach for something firmer.
I like the strength of walls, deceptive shelter,*

things I can hold, and count, and see.

*But you, Lord, had nowhere,
no home to lay your head.*

No empire, No army.

*Just a few men and women, simple folk,
vulnerable as you.*

*People like Peter,
whirling like a weathercock in a storm,
facing all ways.*

*Yet you chose him to be a rock.
And built a kingdom of hope.*

*Not to be measured by this world.
Intangible as perfume.*

*Moving like the wind.
Blowing where it will, over the walls that divide
us.*

*A breeze of hope,
turning the flank of opposition.
Covering the stale smell of old fears and infidelities
with the fragrance of forgiveness.*

*Teach us, Lord, that love can't be measured,
Eternity can't be weighed.
Just lived.*

And put a little in my heart today.

(Written by Eddie Askew. (dec.)
Used by permission - Leprosy Mission International.)

Church Services during May, 2008

4 th	10.30am.	Worship Service and Sunday School. conducted by Jay Brooks. Followed by Annual General Meeting and BBQ
11 th	9am.	Worship and Communion Service conducted by Dr. Avril Hannah-Jones
18 th	9am.	Worship service and Sunday School conducted by the Worship Team
25 th	9am.	Worship service and Sunday School conducted by Dr. Avril Hannah-Jones

Living Word Christian Church



~ Inspire Women's Meeting ~

Saturday 14th June 2008

Inspire
Women's Meeting

**Saturday
14th June**

9am

**Living Word
Christian
Church**

**7 Mitchell Crt
Romsey**

**International
Guest Speaker:**

**Glenda
Watson**

**June
'08**



Glenda Watson's life story is an encouraging account of triumph over tragedy! From the tragic and untimely death of a young husband to overcoming the pain of a traumatic divorce, she has triumphed over all the challenges and heartache of being a single mother of five children.

Glenda now travels the world inspiring others to walk in strength and dignity and complete restoration.

REGISTRATION DETAILS:

Early Bird: \$30 (closes 14th May 08)
Full Cost \$40 (closes 6th June 08)
(Brunch included)

Registration Enquiries:

Contact: Denise Eddy
Phone: (03) 5429 6327

**Venue: Living Word Christian Church
7 Mitchell Court Romsey Vic 3434**

Ph/Fax: (03) 5427 6327
Email: livingword@iprimus.com.au

Bookings Essential

Sunday Service Times:

10am
@ 7 Mitchell Court Romsey

6pm
**@ Woodend Community
Centre, Woodend**

**Weekly Life Groups,
plus Men's, Women's,
Youth & Children's
Groups**

**Church bus available for
hire for Community
Groups.**

THE WOOD BLOKE SPLIT RED GUM FIREWOOD

April-August Prices
PRICES FOR ROMSEY LANCEFIELD AREA

2 CUBIC METERS \$200
3 CUBIC METERS \$290
4 CUBIC METERS \$380
6 CUBIC METERS \$555
8 CUBIC METERS \$720

Minimum Delivery 2 cubic meters

FREE DELIVERY TO LANCEFIELD AND ROMSEY
Also very Competitive pricing on Bottled Gas, with free
12 month rental on new connections.

BBQ gas also delivered to your Door!!

**Tuesday & Friday deliveries on
Gas & BBQ Gas Cylinders**

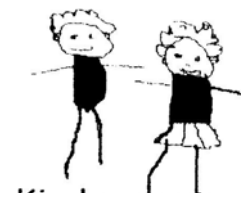
**Also will be stocking ATV Motor Bikes
in 49cc, 110cc & 250cc.**

PHONE MANNY

0418-570-249

AH 5429-1135

Prices for Winter 2008



ENROL NOW FOR 2009

LANCEFIELD KINDERGARTEN
is taking *enrolments* now
3 yr old and 4 yr old groups available

Enrol at kindergarten on:

Monday 26th of MAY 1:30pm-2:00pm

Tuesday 27th of MAY 12:30pm-1:00pm

\$5 booking fee and proof of age required

Ensure that your child has the opportunity of a kindergarten place in 2009

Any questions contact

Kindergarten 54291388

Enrolment officer on 54291028

Rave Reviews

Isn't the year just flying by? Have you got stuck into those New Year's resolutions yet? Was one of them more "me time"? Well now's the time to catch up on that particular resolve by popping into your local library to borrow and read some GREAT books. Enjoy!

Sucked in – Shane Maloney

As the blurb on the front of the book says "Maloney just gets better." This is the sixth book about the hapless Murray Whelan, Labor party gopher and now Upper House member for Coolaroo. When skeletal parts are found at the bottom of Lake Nilharcootie, Murray finds himself drawn into a web of intrigue from 20 years previous that certainly includes his good, but recently deceased mate, Charlie Talbot. Whilst the plot meanders, it is Maloney's use of first person, dead-pan narration and his glorious employment of laconic Aussie understatement, at its best, that is the highlight of the book.

Talk to the Snail – Stephen Clarke

I enjoyed Stephen Clarke's first book *A Year in the merde*

but found the sequel *Merde actually* a little bit pretentious. However he's back to his best form with this little gem subtitled *Ten Commandments for understanding the French*. From eating to working to not being served Clarke covers all aspects of French life and how even the French have trouble negotiating the pitfalls of everyday living in France. An entertaining and informative read that helps to explain a little more about the Gallic psyche.

Starfish sisters – J.C. Burke

Burke is one of the recent crop of "new kids on the block" authors writing for teenage readers and she does so exceedingly well. Knowing absolutely nothing about surfing will not stop you from enjoying her most recent publication, 'Starfish Sisters'. Four talented teenage surfers, Georgie, Ace, Micki and Kia and thrown together in the same bungalow for a 3 week training camp for elite surfers. Needless to say there are fights, jealousies and secrets amongst them and all is not plain sailing, err surfing. How they resolve these issues makes compulsive reading as Burke tells the same story from four different viewpoints. A great read and there is a sequel in the pipeline.

STOOZE TRIM SHOP

Auto and Domestic Upholstery
Free Quotes, Pick-up and Delivery

Contact Stuart 0431 675 116

SAM HOWATSON PLASTERER

**Servicing Romsey and
Lancefield Area**

54 291 194

0421 172 992

CHES Property Consultants

cpc Property Management



Elizabeth Dormontt
Director
Licensed Real Estate
Agent



Fabian Phillips
Sales Consultant



Janet Bottams
Office Manager



Debra Turner
Reception

RENTAL PROPERTIES
URGENTLY REQUIRED !!
INVEST NOW !! Quality tenants need your help !!

Call 5429 5544



Karen Sawyer
Property Manager

Specialising in Sales and Property Management in Romsey, Lancefield and Surrounding Areas.
Professional and Friendly Service .
Free no-obligation appraisal of your Property!

CHES PROPERTY
102 Main Street, Romsey
Phone: (03) 5429 5544 Fax (03) 5429 6699

Mt William Axe Quarry Open Day – Saturday May 24

Deep Creek Landcare Group (DCLG) are please to advise of an Open Day at the Mt William Stone hatchet quarry. The Wurundjeri traditional owners have granted this rare access to the site and will be represented on the day by elder Annette Xiberras to explain the importance of this site to the Aboriginal people. This will be the first opportunity the general public will have to access this site since its recent inclusion on the National Heritage List.

We will also have Macedon Ranges Environmental Officer, Lachlan Milne present to discuss and identify the well preserved indigenous vegetation on this rugged site. Due to the nature of the terrain sturdy footwear is recommended.

The Mt William quarry is approx 9 km off Mt William road, which in turn is approx 5 km east of Lancefield. It is proposed to commence tours at about 11 am with a free sausage sizzle and refreshments to follow. Please note that parking is limited so some walking will be required.

Whilst there will be no charge for this event all participants will be required to register on the day. Please RSVP to John on 5429 2011 or David on 5429 5880 by 20/5/08 for catering purposes.

Matthew Way
Bobcat & Tipper Hire
Romsey & Surrounding Areas
5m & 10m Trucks

Driveways Site Cleaning Landscaping
Tank Pads Sustainable Gardens Levelling
Fully Insured

Free Quote Ph: 0401 176 731 or 5429 6306



Once Upon A Memory

Creating personalised invitations and cards for many occasions.

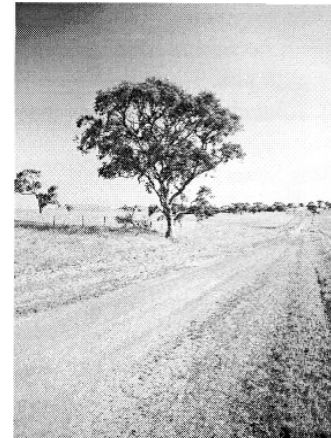
A range of scrapbooking products available for your perusal & check out our online shopping at

www.onceuponamemory.com.au

Coming Soon – Event Planning
Coming Soon Also – Monthly Scrapbooking/Card Making Workshops.

For more information contact Natasha – 0438 357 599 or email info@onceuponamemory.com.au

ENCOUNTER WITH THE BEST OF AUSTRALIA



Last week I went to Lancefield to speak at a World Day of Prayer Service at the Anglican Church. There were people there from all the churches in Lancefield and Romsey, a welcoming group of men and women coming together in this service that connects church people in rural areas and cities within Australia, and Christians around the world especially in 2008 with the women of Guyana. I was almost overwhelmed by the warm welcome, the great conversations after the service and the sharing of personal stories - which after the service was accompanied by a good lunch and cup of tea.

Not wanting to quickly leave this most hospitable area, I drove around the countryside and eventually stopped in Romsey, wandering into the town pub on this hot day.

As a newcomer into the pub, I felt somewhat intimidated by the groups of men standing around, many of them with their Akubras still on. But one group invited me to join them, and after the introductions were over a man suddenly yelled, "Get this bloke a beer - it's my shout". I ordered a snack to go with the drink and sat down to talk.

The chap next to me, asked many questions, so I told him that I come from a country call Nagaland which is at the tri junction of Tibet, Burma and India. His face lit up and he said "I have never been overseas but one place I would really like to go is Tibet". We talked about Buddhism, India, Nepal, Tibet, Himalayas and everyone in the pub joined in the conversation.

I then had a chance to ask about something I noticed on my drive to Lancefield; the road signs advertising "**fresh potatoes for sale**". I had stopped to buy some but there was nobody except some bags of potatoes and another sign saying "**drop money in the box**". To my surprise I found out that the system works well as the chaps in the pub told me that no one has ever walked away with the potatoes without putting the money in the box.

I also saw signs saying "**cow dung \$2**" but when I stopped to buy, it was all gone. So after my drink I told the guys in the pub that I was looking for some cow dung for my garden. A man in the corner shouted, "So you are looking for bull shit - we got plenty here!" Everyone laughed but one man said '**horse poo** is better and there is plenty in the nearby farm'. When I asked how to get to the farm everyone present in the pub joined in to give ideas and help, and it quickly turned into a community project. One offered his trailer which I had to decline as I had to drive about a hundred kilometres to return it, another offered bags and one phoned a nearby farm to enquire. When I asked the direction to the farm, the gentleman next to me quickly said "I'll take you there; it's only a few kilometres from here". So he jumped into my Ford Station wagon and we talked on our way to the farm. By this time we had become good mates.

When we reached the farm there was a woman working in the sun, sweating heavily but she smiled and was not surprised to see us. She showed us where the 'horse poo' was and told us to take as much as we could carry. I tried to pay but she refused to accept money so we put four huge bags of horse poo into my station wagon and drove back to the town. As we were leaving the farm my friend told the woman he was doing this to show that there are still some good people in Australia. When he got out of my car I thanked him for all he had done and said 'God bless you brother - we will meet again.' I was surprised to see tears in his eyes when he said bye.

Something in the spirit of these folks deeply touched me. Throughout the whole day I had met with open, friendly, hospitable people, all welcoming me into their various communities. As an immigrant I have noticed increasing intolerance of foreigners in recent years but this KARMA (as my friend put it) was like a fresh rain on hot summer's day. I shall never forget this encounter **with the best of the best of the best of Australia.**

Visier Sanyü

(Submitted with permission of Visier Sanyü who is a member of the Victorian Council of Churches)

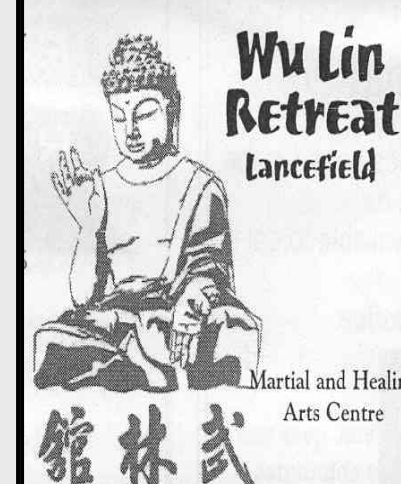
WU LIN RETREAT proudly presents:

Traditional Karate for self defense, confidence and discipline. Children and adults beginner's classes began January 2008.

Tai Chi. Beginners welcome. Saturday 10 am and Tuesday 7.30 pm.
New program began January 2008..

Non-surgical facelift treatment (money back guarantee) .

www.wulinretreat.com
Email: james@jamesumarac.com



Martial and Healing Arts Centre

Traditional Chinese Medicine Clinic for improved vitality by re establishing balance and harmony, a proven gentle and effective approach.

Wholistic treatment of many health related issues and chronic injuries.

By appointment only.

For appointments call **Shou Mei on 5429 2122**
www.wulinretreat.com



St. Mary's Parish - Lancefield & Romsey

27 Chauncey Street, Lancefield
Cnr. Main Street & Barry Road, Romsey

Parish Priest: Fr. George O'Connor
Pastoral Associate: Mrs. Joanne Reuther
School Principal: Mr. Anthony Falls

Presbytery: 5429 2130
Convent: 5429 1582
School: 5429 1359

Parish Website: www.users.bigpond.com/stmlancefield

MASS TIMES

Saturday:
7.00 p.m. (summer time) Lancefield
6.00 p.m. (winter time) Lancefield
1st & 3rd Sunday of the month:
8.00 a.m. Lancefield and 10.00 a.m. Romsey
2nd, 4th & 5th Sunday of the month:
8.00 a.m. Romsey and 10.00 a.m. Lancefield

RECONCILIATION

After weekday Mass or by arrangement.

BAPTISMS

February, April, June, August, October, December.
For more information, please phone 5429 2130.

REGULAR EVENTS

SVDP Drop-In: First Thursday of each month, 10.30 a.m. to 4.00 p.m., St. Mary's Church Hall, Romsey. All welcome to come for a game of cards/chat and free lunch.

Spiritual Guidance: Last Wednesday of each month at the Presbytery, 27 Chauncey Street, Lancefield. John Stuart, Councillor and Guide. Tel: 5429 2130 for more information.

NOTICES

SATURDAY EVENING MASS

The Saturday evening Mass time will now be 6.00 p.m. until the start of daylight savings in October.

ST. MARY'S PRIMARY SCHOOL NEWS

It has been a very busy term for all of us at St Mary's Primary School. The Grade 3 children have been busy preparing for the Sacrament of Reconciliation and the Grade 6 children are preparing for the Sacrament of Confirmation. The children will receive these Sacraments in April.

Our Open Day will be held on Monday May the 5th between 12.00 p.m. and 1.00 p.m. This also coincides with Family Week. Please come and have a look at the wonderful things that are going on around the school. Please note that 2009 Prep enrolments close on the **20th JUNE**. Forms are available from the school office.



Romsey Community House Inc.
A Learning and Activity Centre
P.O.Box 418
Romsey, Vic 3434

HOUSE NEWS

Programs for Term 2:

Art Classes: For Children and Adults:

Contact Gillian on 5429 3996 Wednesdays-Sundays

Art & Craft Market for Romsey

The Romsey art and Craft Market is off to a flying start, with markets planned now for each month (details are published elsewhere in this edition of the Romsey Rag).

For information phone Gillian on 5429 3996 Wed—Sun.

Yoga With Kym Oliver Wednesdays 7.00 pm—8.30pm at Romsey Primary School.

Cost: \$12 per session or \$120 per 10 week term, \$15 per session casual rate.

For further information or bookings contact Kym Oliver on 54292134.

Writer's Group with Dee White—new members welcome.

Please contact 0412 275 152 if you are interested in joining. Meets once per month usually on the first Monday night at 7.00pm at Romsey Primary School. Please ring to confirm dates as these can sometimes vary.

Crop till you drop: Each third Saturday of the month for all you Memory Makers and Scrapbookers. Starts at 5.00pm, cost is \$15 per session and includes pizza or fish'n'chips for dinner. For further information contact Belinda Williams 54291693 / 0407 203 826.

Drop In Craft Morning every Thursday from 10.30 at CFA Headquarters, Stawell Street, Romsey. Gold coin donation. Bring along an unfinished craft item, or a skill to share and enjoy the relaxed friendly atmosphere with a group of like-minded people. Or just come for a cuppa and a chat!

Payments for classes booked through the Community House need to be made at Romsey Primary School or mailed to Romsey Community House, P.O. Box 418, Romsey.

For information, to express interest or suggest new activities please contact Robyn on 0412 275 152

What's happening at the Hub?

Well—it's finally happening! We are advised by the builders and the Shire that we could possibly be "open for business" at the Hub on May 12th or thereabouts. Some of our committee members have looked at the near-completed building and are very impressed with the facilities. The whole complex will be a huge asset to Romsey. We don't have a confirmed official opening ceremony date, but we believe it will be some time in June. We look forward to lots of people calling in to see what the Community House is all about, and to offering an expanded range of programs commencing in semester 2.

If you are thinking of joining one of our existing activities over the next few weeks, while we are making the transition to our permanent home, please contact Robyn on 0412 275 152 to confirm the location as it may have changed.

Program Planning

Thank you to the people who have participated in our snapshot surveys in the shopping precinct. We have gained a vast amount of really valuable information, and made some very useful contacts for future House programs. Thank you also to the committee members who volunteered their Saturday mornings to conduct these surveys.

Building Relationships With Community Groups

One of the short term aims of the Community House is to build strong relationships with other community groups and organizations in our area, so that we can support and promote each other. Members of other groups (and anyone else who is interested) are always welcome to attend our committee meetings. For meeting dates contact Robyn on 0412 275 152.

Don't forget—if you have an idea for an activity, or a skill that you would like to share with others, please let us know!

BINGO BINGO BINGO

Every Thursday evening at St. Mary's Church Hall at Romsey

Doors Open 7.00 p.m. EYES DOWN 7.30 p.m. 30 games (2 sessions of 15 games) finishing around 9.45 p.m.
\$3.00 per 15 game book Canteen facilities No entry fee Free tea and coffee

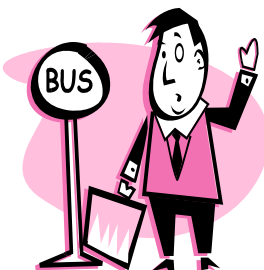
ROLLING JACKPOT GAME 30 – UP \$10 PER GAME

"ATTENTION CITY COMMUTERS"

The Lancefield Romsey Commuter Bus offers a Mon-Fri return service direct to the CBD at the cheapest rate available in the shire. Currently **\$40.00 per week** for permanent travelers.

Departs Lancefield General Store 6.35am, 3 pick up points in Romsey, arrives CBD 7.40am

Departs Cnr William & Latrobe Sts 5.20pm, arrives back in Romsey & Lancefield 6.30pm



Seats currently available. For more details ring Muir on 0354 255505

Challenge us to deliver a better value home loan.

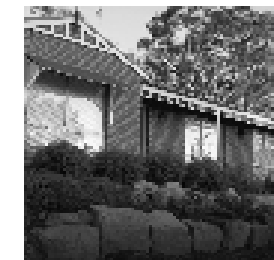
At your local Community Bank® branch we work hard to make sure our home loans deliver great value.

That means your loan needs a highly competitive interest rate - plus the additional rewards, real customer service and financial advice that make all the difference.

20A High Street Lancefield
Phone 5429 1977

With interest rates on the rise, why not call in and see us about your home loan today. Whether you're refinancing or looking for a new home loan, we're confident you'll find a Bendigo Home Loan that's right for you.

Shop 1, 112 Main Street Romsey
Phone 5429 5526



Bendigo and Adelaide Bank Limited, The Bendigo Centre, Bendigo, VIC 3550. ABN 11 068 049 178. AFSL 237879. (S18024) (02/08)

Lancefield and Romsey Community Bank® branches

Major Upgrade For Lancefield Cemetery

The Board of Trustees for the Lancefield Cemetery has decided on a series of comprehensive improvements at the cemetery which has served the Lancefield, Romsey and surrounding districts for 148 years. Trustee and Board Secretary, Mike Taylor, said the improvements would result in a transformation of the cemetery, and there have already been strong indications of community support and approval.

Trust Chairman Peter Mitchell said much thought and planning has already gone into what will be a very significant upgrade.

Already a dry stone retaining wall for the new cremation memorial garden is nearing completion. A rotunda is to be constructed to provide shelter for visitors during inclement weather.

"We consider the rotunda will fit the landscape extremely well, and be put to good use," Mike said.

The memorial garden will then be established. Such a facility is fairly common in most cemeteries, and Lancefield trustees considered it necessary that they provide this alternative to interment [of ashes] within a traditional grave site.

An all-weather sealed main driveway to guarantee access for the hearse at funerals is soon to be installed, together with mains power connected to the cemetery for the bore, which will provide constant water for visitor use and watering of the new lawn grave section. Both the driveway and power connection have been made possible following a successful grant application to the Department of Human Services.

New Fence

A major improvement will be a new brick fence, replacing the current wire mesh fence. This will lift the appearance of the cemetery considerably. Mike said the Trust has been overwhelmed by the support received for the fence project. "Contractors and suppliers have been very generous. In particular we would like to acknowledge the support received from Selkirk Bricks and Pavers of Ballarat. Following an approach to Mr Jock Selkirk, the company donated in excess of 15,000 quality bricks—a tremendous gesture," Mike said. "Local tradesmen have come forward and volunteered their services to install some 60+ balustrade panels and matching gates. It has really heartened the trustees. Following completion, an avenue of flowering crepe myrtle trees will be planted along the roadside reserve."

The Trust intends to install two plaques to publicly acknowledge the wonderful support from all suppliers, as the project would not have been possible without them. The Trust Chairman said it is hoped the major improvements will inspire some people to pay more attention to the condition of some of the graves in the cemetery.

"Our cemetery is steeped in history, and it is wonderful to see some of the graves which have been restored in recent years," Peter said.

"We are fortunate to have a board of trustees who are committed to beautifying and improving our cemetery's appeal and aesthetics for the community we serve. It is our hope that we can develop our cemetery into one that our local communities can be very proud of, both in the near and long term future," Mike concluded.

Mike further advises that for public safety reasons a temporary security fence will be erected to preclude public access between excavations of the fence foundations and the pouring of concrete. Once this is done access will be possible through the security fence via the pedestrian gate. During the two to three weeks when access is not generally available, special arrangements may be possible by contacting Mike on 5429 2085.

Change to Wildlife Emergency Phone Number – Effective immediately

As of Monday 21st April 2008, Wildlife Victoria's Emergency Phone Number is changing to **1300 094 535**.

This is due to the closure of Telstra's 0500 service, which means that the old number has been completely shut down – there is no diversion facility or recorded message.

Wildlife Victoria's emergency number receives in excess of 20,000 calls per year for assistance with wildlife. The service is supported by volunteer telephone operators, and wildlife rescuers 24 hours a day 7 days a week.

So please put the new number in your phone and delete the old 0500 number:

1300 094 535
(13-000-WILDLIFE)

Combined Probus Club of Romsey/Lancefield Inc.

Our AGM was on the 27th of March. A good attendance of members were at the meeting. Nominations were read by Peter O' Rourke from the Romsey Rotary Club and all committee positions were filled. We went to the Soltan Pepper for lunch after the meeting, where we all had a delicious meal. It was nice to hear everyone chatting away and enjoying each others company.

Meetings are held on the fourth Thursday of the month at St. Mary's church hall beginning at 10.00am.

The May meeting is on Thursday May 22nd.



Romsey Fire Brigade.

A volunteer brigade, proudly serving our Community since 1884.

In Victoria, community volunteer-based fire fighting services began in the early 1850's on the goldfields of Ballarat, Bendigo and Creswick, out of the need to protect homes, buildings and surrounding areas. Fires were fought by means of a human water chain, with buckets of water being passed along from person to person until the person on the end threw the water on the fire. Young children often collected the empty buckets and returned them to the water source. Fires in the bush were put out using wet bags or green tree branches.

Next came the Hook and Ladder Brigades, where long hooks were used to pull down buildings next to the fire to stop it from spreading. All of the equipment was carried to the fire by hand-pulled carts.

As towns became wealthier, hand-operated pumps were bought and later more modern pumps were bought and used. Sometimes these pumps were so big they needed 40 men to pull the cart to the fire. Towns and even individual businesses would organise their own brigades and in 1884 the people of Romsey met to form their own fire brigade and it has continuously existed in various formats through until the present day. During the 1890's the Country Fire Brigades Board was formed - funding was given to the Volunteer Brigades from the government and insurance companies. After the disastrous bushfires in 1939 and 1944, which caused many deaths and huge property damage, the Country Fire Authority was formed so as to co-ordinate the different brigades and to try and prevent the large damaging fires occurring.

Today CFA is a modern organisation with a range of fire appliances capable of dealing with various fires and emergency incidents. There are 1,228 Brigades in outer metropolitan Melbourne and country Victoria, and these Brigades are organised into 143 Groups to provide backup for each other when needed. Groups are then coordinated into 20 CFA Regions and CFA is one of the largest firefighting forces in the world with approximately 58,000 volunteers. Our volunteer operations are supported by more than 400 career firefighters and over 700 staff in support and administration roles. CFA works closely with everyone in the community. This means working together with the Metropolitan Fire & Emergency Services Board, Victoria Police, Ambulance, Department of Sustainability and Environment, Local Government, State Emergency Service, Weather Bureau, Red Cross and many other organisations which can assist in emergencies. CFA attends more than 34,000 emergencies each year. The Romsey Fire Brigade provides a 24 hour a day, 7 day a week service, through a core group of around 30 operational firefighters, who are all volunteers.

The CFA provides brigades with equipment, appliances and infrastructure through funds allocated by the State Government, however that money does not service all the needs of the individual communities and brigades must source additional funds from elsewhere. This means applying for grants from other community and philanthropic bodies, but competition is fierce and we can't all be successful. It is especially difficult in smaller communities such as ours, but as we rapidly grow we need to forward plan to meet our future needs. That is why during in April we will distribute a brochure throughout the township to launch an appeal for funding assistance from our community for the purchase of a Command and Control vehicle and other equipment to make our job a little easier and to better serve you.

We ask that you please take the time to read the information and to make the decision to assist us, if you can possibly do so.

ROMSEY TRENCHING & HORSE SHELTERS	
<ul style="list-style-type: none"> TRENCHING FOR POWER, WATER STORMWATER 	<p>IDEAL FOR CONFINED SPACES</p> <p>HORSE SHELTERS FULLY WELDED, GAL, RHS FRAME HARDWOOD KICKBOARDS</p>
<p>Phone: ANDREW CLEMENT FOR A FREE QUOTE 0409021722</p>	

<p>STEVE XERRI HAND CRAFTED IRONWORK GENERAL WELDING & FABRICATION PH: 54335177 MOB: 0403664721 E-MAIL: KAMAROOKA@NEX.NET.AU</p>



COME ALONG TO OUR PARTY PLAN AFTERNOON

And support our school

Principal: Mrs Joan Gibbs
Phone: 5429 5099 Fax: 5429 5675
Station Street, Romsey Vic. 3434
Email: romsey.ps@edumail.vic.gov.au
Website: www.romseyps.vic.edu.au

Sausage Sizzle Cake Stall Plant Sale

Date: Tuesday May 27th from 2.00—6.30pm

Venue: Romsey Primary School Gymnasium

Raffle: Tickets 50 cents each. A hamper filled with gifts from the participating companies will be drawn on the night.

Stalls will include:

- Tupperware - Avon - The Body Shop - Le Reve - Chefs Tool Box - Intimo Phoenix Trading - Accessorize Me - Enjo - Curious Land - Postie Clothes makeApage Scrapbooking - Missy Moos - Emma Page Jewellery Lorraine Lee Linen - Occasion Graphy - Hieroglyphic Horizons And More.....



'Your child's home away from home'

Lula Mays Childcare is a privately owned 45 place long day care centre in Lancefield.

We offer drop off and pick up to Romsey and Lancefield Kinder and a school and vacation care program.

All meals are home cooked and all tastes and needs are catered for. Nappies are supplied.

Childcare Benefit is available to eligible families making care affordable from as little as \$8.00 a day.

Book now and receive your first week free!

Enquire now on: Ph 54292464 or lulamayscc@bigpond.com

Trivia Night

Are you the smartest person in the Macedon Ranges?

Newham Mechanics Hall
Rochford Road, Newham

10th May at 8pm

Great night of fun, entertainment and the chance to win loads of prizes.

Lucky door prize and mystery auction.

In aid of Newham Hall restoration

BYO drinks & nibbles

Tickets \$20

Students \$5

Tea, coffee and cake provided

RSVP 2nd May

Coral 54270266

Macedon Ranges Bridge Club

The Macedon Ranges Bridge Club now offers three opportunities each week to play duplicate bridge; the most popular card game in the world. We meet on Monday afternoon at 12.30 (for 12.45 start) and Tuesday evening at 7.15 (for 7.30 start) in the Woodend Community Centre Hall on the corner of High and Forest Streets. We also offer a social gathering at the Woodend Tennis Club rooms on Thursday afternoon at 12.30 (for 12.45 start). All sessions run for about 3 hours and include a break for tea/ coffee and biscuits, and all visitors are made to feel very welcome.

If you are interested in playing but need to brush up on your bidding and card-playing skills, or wish to start learning from scratch, we are also conducting lessons on Tuesday evening from 7.30 starting on 1 April. You can contact the following if you would like any further information; Rex Fox (President) on 5424 1569, xrconsult@hotmail.com, or Peter Wells (Secretary) on 0407 302 308, peter.wells@sci.monash.edu.au, or visit our web-site at <http://www.mrbc.asn.au>

Body Tunes Remedial Massage

Now available at

Suzanne's Totally Natural Beauty Therapy
Suite 2/110 Main Street, Romsey.

Trading hours:

Monday, Tuesday, Wednesday, Friday
10.00am—5.00pm

Thursday 10.00am—7.30pm

Weekends by appointment only.

Call Stephanie Wooster
5429 1988
0407 367 840

Annie's Pet Grooming & Hydrobath

0422 160 864
5782 0358



Probus Club

Romsey – Lancefield

Meetings of the Romsey – Lancefield Probus Club are held on the 4th Thursday of each month at St Mary's Church Hall, corner Main and Barry Streets, Romsey, at 10.00am.

Probus is open to all retired and semi-retired people to enjoy a great social and friendly atmosphere.

Contact

Mrs Pat Shannon (President) on 5429 6194 or Mrs Jeni Clampit (Secretary) on 5429 5480



FOR SALE PHOTOCOPIER

Lanier LD 118d black and white photocopier in full working order with duplex function, document feeder, full service history (last serviced in March '08). Price \$500.

Please contact Raelene Mottram on 54 296272 for further information.

Water

Supplying domestic and livestock drinking water to the Macedon Ranges

Macedon Haulage Company

Ph:0438 974 706



