

Romsey Golf Club

Ladies Report

As part of our wind down for the year we went Woodend to tackle the hills and all survived, some not wanting to go again. It was a successful day and Leila managed to break her handicap, which was very well done. She also came down another .5 at home in December. Father Christmas was good to her and she now has an oversized driver and a new putter so we are waiting for the results of these new clubs. Jan received a new buggy so she will be speeding around the course.

December was a busy social time for us ladies with many breakups and good times. After our break we are looking forward to getting back into the swing again. We are working on our Relay for Life fundraising, with a Charity Golf Day planned for Sunday 9th Feb. 4 person Ambrose, with a 9.30 hit off. \$10 per person and if you can't get a team we will put you in a team on the day. Lots of novelty events on the day as well as a hole in one comp after the golf. Refreshments will be available on course and a BBQ will be available after the golf. For more information or to book in please ring me (Beryl) 54295411.

Soon after school resumes we are holding a "Bring a Friend / Come and Try Day" so if anyone is interested we would love to welcome you, no clubs necessary as we will share with you. All you need is a sense of humour. It will only be a short game followed by lunch and more laughter.

Recipe for the month

Rum Balls

3 cups cake crumbs
3 Tablespoons jam
2 tablespoons cocoa
1-2 tablespoons rum or brandy
2 tablespoons chopped nuts.

Mix all ingredients together to form a stiff mixture. Roll into small balls and coat with chocolate sprinkles or coconut.

Beryl Cole
54295411

Operation Uplift.

Many thanks to the women, in the district who updated their bras, so they could donate their old bras to the women in Papua New Guinea. It has truly been an uplifting experience for us as well as the women in Papua New Guinea. The Lions Club of Alexandra has forwarded 4000 bras and sent their sincere thanks for our support of the project.

Beryl Cole
54295411

Do You Have Some Time To Spare?

The Romsey Rag can always do with extra hands to help with the collating of the paper each month. If you can spare an hour or two once a month on a Thursday morning, please contact Collating Team Co-ordinator Joan Sparkes on 5429 5848, or simply turn up at the Romsey Primary School on collating day (commencing at 9.00am). Collating dates for each edition are published on page two of the Rag.


Get Well:

Printing guru Collin Miller who joined the Rag team last year has been missing in action for a couple of months due to ill health. Get well, Collin, and come back soon!

Woodend Bears
Relay For Life fundraiser
Fun Family
CAR RALLY
Sunday, February 15th
\$25 per car
Registration 10am Buffalo Stadium
Details: 542716700 39399838



On Eagles Wings
128, Main Street
Romsey



New Shop Opened

Selling
Hard Yakka Gear
Crafts
Books for Adults and Children
Good Quality Pre loved Clothing
Trailers for Hire
More to Come!

All Welcome



THE ROMSEY RAG

Issue No. 268

2000 copies produced each month at Romsey Primary School as a service to our community and proudly supported by the Macedon Ranges Shire Council

February 2009

THE FEBRUARY EDITION OF THE ROMSEY RAG IS PROUDLY BROUGHT TO YOU BY
- Romsey Rodeo 2009 -

SOLTAN  PEPPER 

Restaurant Romsey are proud to present
"ROMSEY ROUNDUP"
RODEO

SUN 22ND FEB 2009
FROM 12:30pm

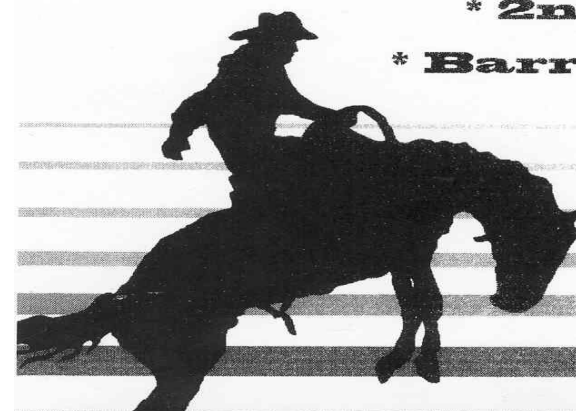
VENUE: ROMSEY PRIMARY SCHOOL

CARNIVAL

Rides, Stalls and Entertainment
From 10am

FULL CATERING - NO BYO

* **Bull Ride** * **2nd Div Bullride** * **Bare Back**
Junior Barrel Race * **Junior Steer Ride**
* **2nd Div Saddle Bronc**
* **Barrel Race** * **Saddle Bronc**



ADMISSION

*ADULTS \$20

*CHILDREN \$10
(UNDER 15yrs)

*FAMILY \$50
(2 ADULTS 2 CHILDREN)

ENTRY TO GRAND STAND EXTRA \$10
per person

ENQUIRES: romseyroundup@hotmail.com

The closing date for copy for the March Romsey Rag is Friday, February 20th 2009.

We cannot guarantee inclusion of copy received after this date.

Please email your copy to the Romsey Rag email address: romseyrag@romseyprimaryschool.vic.edu.au

When submitting graphics, please use a Jpeg format, as we cannot guarantee that we can open or print other formats. Also, ensure that text is in a format that can be edited.

Editorially Speaking

Romsey Rag Editorial Committee:
Joan Gibbs, Robyn Moore

Layout and Design:
Robyn Moore, Anne Cappler, Sue Hayes

Printing:
Robyn Moore, Colin Miller

Advertising / Sponsorship:
Christie Brown—5429 5099 or Romsey Post Office

Collation Team Co-ordinator:
Joan Sparkes—5429 5848

Contributions:
Articles should be left at the Romsey Post Office (fax 5429 5134) or Romsey Primary School (fax 5429 5765) by 12 noon of the cut off day as advised on this page and the front page.

We prefer articles to be submitted electronically or on disc. Legible typed or handwritten items may be accepted. All material submitted for publication must be named and have contact details.

Articles can be sent via e-mail to: romseyrag@romseyps.vic.edu.au

Please ensure that any text is sent as word documents and logos / photos are sent as .jpg files.

Views expressed are not necessarily those of the Editorial Committee. All contributions remain the responsibility of the author.

Advertising:
Rates are GST inclusive.
Front page sponsorship:
\$130 per half page
Business card: \$25 per issue
\$200 per year in Business Directory
Quarter page: \$50 per issue
Half page: \$100 per issue
Full page: \$180 per issue
Line ads: e.g.- For sale, births, deaths, marriages, engagements - \$10
For invoicing please include name & address details
Cheques must be made payable to Romsey Primary School Station Street, ROMSEY 3434

Distribution:
2000 copies delivered to the Romsey community at the commencement of each month.



Macedon Ranges Shire Council - Generous supporters of the Romsey Rag

Romsey Rag Publication Deadlines 2009

Edition	Closing date for copy	Collating date
March 2009	Friday February 20th	Thursday February 26th
April 2009	Friday March 20th	Thursday March 26th
May 2009	Friday April 24th	Thursday April 30th
June 2009	Friday May 22nd	Thursday May 28th
July 2009	Friday June 19th	Thursday June 25th
August 2009	Friday July 24th	Thursday July 30th
September 2009	Friday August 21st	Thursday August 27th
October 2009	Friday September 18th	Thursday September 24th
November 2009	Friday October 23rd	Thursday October 29th
December 2009	Friday November 20th	Thursday November 26th

ROMSEY / LANCEFIELD SENIOR CITIZENS

Meet each Monday.

Come and enjoy lunch, a game of cards, indoor bowls or just a chat with a very friendly group of people.

Bus trips arranged each month.
For details, please ring Rae Hooke on 54291602.

Romsey & Lancefield Probus Club

President: Mrs. Pat Shannon 5429 6194
Secretary: Mrs. Jeni Clampit 5429 5480
Probus Meetings are held at St. Mary's Hall, Main Street, Romsey at 10am on the fourth Thursday in each month.

There is a guest speaker at each meeting. We have an outing on the third Wednesday of the month. (Either a trip or luncheon)

Coffee Mornings and Musical Afternoons.
Persons interested in this club and wish to have more information please contact the President or Secretary at the above phone numbers.
The first meeting for 2009 is Thursday, 26th February, at 10am.

“ATTENTION CITY COMMUTERS”

The Lancefield Romsey Commuter Bus offers a Monday to Friday return service direct to the CBD at the cheapest rate available in the shire.

Still only \$40.00 per week for permanent travelers.

We also cater for casual & adhoc travelers.

Departs Lancefield General Store 6.35am, & Romsey Hotel 6.42am, arrives CBD 7.40am.

Departs Cnr William & Latrobe Sts 5.20pm, arrives back in Romsey 6.20pm & Lancefield 6.25pm Seats currently available.

For more details ring Muir on 0354 255505



From the Cultural Development Unit of the Macedon Ranges Shire Council.

Performing Arts Calendar for 2009 featuring

- The Museum holding exhibitions throughout the year, starting with “Dolls, dolls, dolls”. All shows will be supported by great activities to involve the whole family.
- Dance in 2009 with T ASDANCE, a contemporary company on tour from Tasmania. (Local students will be able to attend workshops with dancers from the Company).
- Drama that’s going to keep you on the edge of your seat with “The Kursk”. This is the real life story about the Russian nuclear submarine that sank to the bottom of the sea, and the desperate race against time to rescue the submariners trapped within.
- The Family show such as *The New Adventure Island*, *The Kids Film Festival* and a puppet show called *Check Out!*
- The series of Morning Musicals. Buy the discounted package and make attending all the shows more affordable.
- The Visual Arts free exhibition of stunning art work from the Cunningham Dax Collection.
- Comedy with visiting comic Fiona Scott-Norman early in the year. Tickets just \$10 per person.

To find out more about the drama classes and dance workshops call 1300 88 88 02.

Tours of the Museum can be tailored for both student and adult groups. Just give the staff a call on 5422 1228.

There are heaps of cultural events happening in 2009. Further information can be obtained from the new look website at www.takeapeek.com.au



St. Mary's Parish - Lancefield & Romsey

27 Chauncey Street, Lancefield
Cnr. Main Street & Barry Road, Romsey

Parish Priest: Fr. George O'Connor
Pastoral Associate: Mrs. Joanne Reuther
School Principal: Mr. Anthony Falls

Presbytery: 5429 2130
Convent: 5429 1582
School: 5429 1359

Parish Website: www.users.bigpond.com/stmlancefield

MASS TIMES

Saturday:

7.00 p.m. (summer time) Lancefield

6.00 p.m. (winter time) Lancefield

1st & 3rd Sunday of the month:

8.00 a.m. Lancefield and 10.00 a.m. Romsey

2nd, 4th & 5th Sunday of the month:

8.00 a.m. Romsey and 10.00 a.m. Lancefield

RECONCILIATION

After weekday Mass or by arrangement.

BAPTISMS

February, April, June, August, October, December.

For more information, please phone 5429 2130.

REGULAR EVENTS

SVDP Drop-In: First Thursday of each month, 10.30 a.m. to 4.00 p.m., St. Mary's Church Hall, Romsey. All welcome to come for a game of cards/chat and free lunch.

Spiritual Guidance: Last Wednesday of each month at the Presbytery, 27 Chauncey Street, Lancefield. John Stuart, Councillor and Guide. Tel: 5429 2130 for more information.

FUNDRAISING

Christmas Raffle: Congratulations to the winners of our Christmas Raffle:

1st prize Josie Aiello, 2nd prize Grace Barbara, 3rd prize Zygi & Jenny Kolodziej, 4th prize Alice McCarthy, 5th prize Rose McCarthy A big thank you to all who generously donated Wicked tickets, items for our hampers and to everyone who helped with selling tickets after Mass and in

front of IGA Romsey; we raised \$795.00!!

SACRAMENTAL PROGRAM 2009

Parents of children wishing to receive the Sacrament of Reconciliation and Eucharist (Grade 3) or Confirmation (Grade 6) in 2009 are asked to contact the Parish Secretary on 5429 2130. As the program is commencing very early in Term 1 2009 you are asked to indicate your intentions as soon as possible. There is a Sacramental meeting on **Thursday 12th February at 7.00 p.m. in St Mary's Church at Lancefield. All children are required to attend this meeting with their parents. This will be the final date to enrol in St. Mary's Sacramental Program.**

BINGO BINGO BINGO

Every Thursday evening at St. Mary's Church Hall at Romsey
Doors Open 7.00 p.m. EYES DOWN 7.30 p.m.
30 games (2 sessions of 15 games) finishing around 9.45 p.m.
\$3.00 per 15 game book Canteen facilities
No entry fee Free tea and coffee

ROLLING JACKPOT GAME 30 – UP \$10 PER GAME

Thank You From Romsey Red Cross

On behalf of the Romsey Red Cross Unit I would like to thank the many people who supported our Christmas Hamper Raffle.

We would be delighted if you could extend that support by becoming a member of the Romsey Red Cross. We would welcome any new members.

Isobel Hood
President



Public Transport Services Update

Macedon Ranges Shire Council conducted a survey of all households in Romsey and Lancefield in September 2008. The results of the survey were as follows:

- Surveys returned:
- Romsey: 99
 - Lancefield: 52

Percentage of Respondents who found travel difficult: 51%
Most common travel problems:

- Children often need to be driven to and from social, sporting and school events or friend's houses in other towns.
- The lack of access to a car and/or license.
- The public transport timetable does not suit.

Most commonly sought new public transport services:

- Lancefield – Kyneton between 9am-6pm Mon-Sat;
- Lancefield – Woodend between 9am-6pm Mon-Sat;
- Romsey – Kyneton between 9am-6pm Mon-Sat; and,
- Romsey – Woodend between 9am-6pm Mon-Sat.

Most common comments:

- A service that connected Lancefield and Romsey with later trains from Melbourne is needed.
- The buses need to be more accessible to people with limited mobility.
- Weekend services to Kyneton and Woodend are needed.
- The state government should rebuild the train line from Clarkefield to Lancefield.

Thanks to everyone who took the time to fill out the survey.

The survey results have been passed onto the state government and the Macedon Ranges Shire Council has begun lobbying to try to solve some of the identified shortfalls.

If you have any further feedback about the survey or public transport shortfalls, please call Chris Curnow at on 0417 130 885.

Existing public transport services

V/Line coach services stop to pick up and drop off passengers in Lancefield, Romsey and Monegetta en route to and from Melbourne every day of the week. The buses will make the return journey 7 times a day on Fridays, 6 times a day on Mondays-Thursdays, 5 times on Saturdays and once on Sundays. Some of these services run direct to Melbourne, while others connect with V/Line trains at Sunbury and Riddells Creek Stations. For more information on timetables, fares and bookings call V/Line on 136 196 or visit the V/Line website at www.vline.com.au.

Romsey Region Business & Tourism Association proudly presents
MARKETING FOR BUSINESS IN REGIONAL VICTORIA
with Pearse Business Development & Marketing

Rob Pearse and Jude Bourguignon each bring over 20 years of practical hands on experience at running small and medium sized companies. They combine this with specialist marketing and communications knowledge and expertise gained while working for major national businesses.



Their goals are, simply put, to demystify this field of critical activity for SME's (Small to Medium Enterprises) and to ensure that every activity brings immediate benefit to their clients.



Where: Romsey Community Hub
When: Monday 16th February @ 7:30pm
Entry: \$10 (RRBATA members free)

Next Month: Planning for retirement
Where: Romsey Community Hub
When: Monday 16th March @ 7:30pm
Entry: \$10 (RRBATA members free)



Romsey Region Business & Tourism Association (RRBATA) Update

Welcome to the first of regular RRBATA updates in the Romsey Rag. The New Year is upon us and the RRBATA would like to take this opportunity to wish all members of the Romsey business community a happy and prosperous year ahead. RRBATA believes that success for local businesses and the positive spin off from local tourism assists the vibrancy of Romsey as a community.

About RRBATA

RRBATA is an incorporated association with paid subscription membership from local businesses based in the Romsey and the surrounding region. Its aims include the following:

- To provide an effective conduit for local businesses and a forum for discussion and exchange of ideas.
- To provide a formal body which can make representation to local government or other statutory organisations where necessary to facilitate communication on issues directly relating to the business community.
- To facilitate growth and business development and growth in the region, and promote the use of the local businesses.

RRBATA has a committee of management and subcommittees which focus attention on particular issues or events (e.g. Rodeo, ODP etc). The rodeo, for example, is a promotional event organised and supported by the RRBATA to promote the Romsey region.

Why should local businesses join RRBATA?

The organisation is only as strong as its membership. It needs a robust and diverse membership base to ensure that it can achieve its aims and function effectively for Romsey.

Calendar:

When & Where	Event
Mon 9 th Feb 7:30pm @ Hub	Committee of Management meeting
Mon 16 th Feb 7:30pm @ Hub	RRBATA Forum - Entry \$10 (Members free): "Marketing for Business in Regional Victoria"
Sun 22 nd Feb	Romsey Rodeo
Tue 10 th Mar 7:30pm @ Hub	Committee of Management meeting
Mon 16 th Mar 7:30pm @ Hub	RRBATA Forum - Entry \$10 (Members free): "Planning for Retirement"

For further information please contact Henry McLaughlin (0411 444 363)



Romsey Community House Inc.
A Learning and Activity Centre
P.O.Box 418, Romsey, Vic 3434
Phone 5429 6724
Email: romseycommunityhouse@yahoo.com.au

Phone 5429 6724
If no answer—leave a message, we will get back to you.

Programmes and Activities for Term 1 2009 February—April 2009

All activities will be conducted at Romsey Community House unless stated otherwise.

Yoga with Kym Oliver. Wednesday 7.00 -8.30pm, access through side door. Cost: \$140 for 10 week term. Casual Rate \$18/session. All enquiries and bookings direct to Kym Oliver on 5429 2134.

Walking Together Program All groups meet Romsey Lion's Park (Near the creek), Tuesday and Friday 9.30am – 10.30am, Enquiries and bookings to Heather ph: 5429 5895

Drop in for a Cuppa weekdays 9.30 – 5.30 – All Welcome
Tea / Coffee - Gold Coin donation

Writers Group

First Monday of the month, Romsey Community House at the Hub, 7pm – 8.30pm Convener: Dee White

Drop In Craft Mornings

Bring along your own craft every Thursday 10.30am – 12.30pm during the school term. Convener – Karyn Gottschling

Craft Evening with Natasha

Every Second Thursday 7pm – 9.30pm, Romsey Community House
Enquiries to Natasha Dziunka ph: 0438 357 599

Adult & Children's Art Classes with Gillian ph: 5429 3996

Crop till you drop – 3rd Saturday of the month. Cost \$15 including dinner.

All day Scrap – January 26th 9am-9pm. Cost \$45. Details Belinda 54291963.

What's New:

DIY Paving in a Weekend - Great hints, tips and practical application so you can lay paving at home. Covers ground preparation, materials, options, concrete mixes, design techniques & finishing. Mix of theory and practical classes. Dates: Sat & Sun 14 & 15 February 9-3pm. Cost \$100. (min 6 people)

Egyptian Cabaret style Belly Dance - designed to improve flexibility, strength and tone in all muscle groups. Movements facilitate improved posture, flexibility, muscle tone, strength, balance, coordination, body awareness, communication, expressive skills and relaxation. This program is intended to be used as a regular exercise regime for both genders and all levels of fitness. Saturdays 10-11.30am Beginner & intermediate Dates: 7th Feb – 4th April. Please wear loose comfortable clothing like tracksuits or

stretchy pants and a comfortable T-shirt. Bring a water bottle. Cost \$110 for a 9 week term. Casuals \$14 session

Pilates for Beginners: Pilates improves flexibility, strength, balance and body awareness. This non-aerobic form of exercise calls for concentration and focus because the body is moved through precise ranges of motion. Mondays 12.30 – 1.30. Cost: \$96 for an 8 week term.

Knitting Group – Every Wed 2 -3pm. Cost \$5 session.

Tuning into kids - a parenting program that helps children learn to understand and regulate their emotions. It teaches parents, awareness and regulation of their own emotions, awareness of their children's emotions, to use children's emotional experiences as an opportunity for closeness and teaching, skills in assisting children to verbally label their emotions, skills in assisting children in problem solving and to guide children's behaviour with appropriate limits.

Registrations essential. Cost: Gold coin donation for tea and coffee.

Dates (6weeks) Friday 27 Feb, 6, 13, 20, 27 March and 3rd April. Time:9.30 – 11.30. Free childminding is available.

Counselling – Counselling, information and referral service by appointment. Phone Amanda Summers 0411627204. Sessions are 1 hour and cost \$25.

Line Dancing – Mondays at 9.30am. Held at the Romsey Mechanics Hall.

Computer basics: We have a number of people wanting a computer basics course this year. If you are interested please let us know as soon as possible.

Program and Course Bookings—Enquiries and further information at the above phone number

Bookings - All payments are required at time of booking, and should be directed to the Romsey Community House at the address detailed above. People who have not paid in full 1 week prior to commencement will be deemed as not attending and be placed on a waiting list.

Minimum numbers for courses and programs apply. If minimums are not met courses may be cancelled at the discretion of the Community House or Course provider.

Refunds may only be given in accordance with the Romsey Community House Refund Policy.

Don't forget—Romsey Community House is for everyone! The programs offered at the House can only reflect your interests if you let us know what they are.

The Committee is working very hard towards getting on-going funding for a paid co-ordinator. We need the support of the community to add strength to our case. How can you do this?

By actively participating in courses and programs

By joining up as a member of the House—membership is \$1 per year. Membership forms are available at the House.

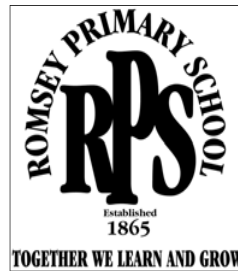
By volunteering to help with the day to day running of the House—even an hour a week would be greatly appreciated.

By lobbying local and state government.

The committee meets on the second Tuesday of each month at the House at 7.00pm.

Romsey Primary School

I am excited for students to be returning to school on Monday 2nd February. Staff returned on Wednesday and have spent three very profitable days involved in a range of professional learning. All teachers spent a half day at Gisborne Secondary College with other primary school teachers completing the Foundation Literacy program with 2 regional literacy coaches. We are also excited to have the support of literacy coach Ms Jennifer Owen working 2 days a week with our teachers and in classrooms. This will support our Strategic Plan and will help to make a significant improvement to student learning in reading, writing and spelling. We have also engaged Ms Loren Peavey to coach the Year 2 and Year 5 teaching teams in Mathematics throughout the year. With this additional support the school is in an excellent position to provide an even better learning environment for all students.



New Structure and New Staff

As we begin another year of education we look forward to the new structure we have established with smaller teacher teams working cooperatively in predominately single year level classes. We are happy to welcome new teachers, Andrew McPherson to Year 6, Kailla Lenon to Year 1, Annie Betts Visual Arts and we welcome back Michelle Milner from family leave who will teach a Year 3 class.

1:1 Learning in Year 6

This year, an initiative called 1-1 laptops will be made available to all schools in the Loddon Mallee region. For Romsey Primary School this means that each student in Year 6 will take part in this program. The 1-1 laptop program will provide each student at Romsey Primary School in Year 6 in 2009 with a Lenovo laptop computer.

The laptop will be supplied in a three way leasing partnership between: The Department of Education and Early Childhood Development (DEECD), Romsey Primary School and each family. The Department of Education, the School and each family will pay for a third of the laptop each, over a three year leasing arrangement. The laptop with wireless networking will go home each night for the students enabling "Anywhere Anytime" elearning." This will complement the wonderful elearning that already takes place at Romsey Primary School through the use of our interactive whiteboards and other ICT hardware.

Romsey Primary School Farewells Mrs Kath Jekabsons

After a little more than 43 years of service to education Mrs Jekabsons has decided to retire. She has been a member of staff at Romsey Primary School for more than 30 years and has even taught some of our parents. We would like to thank her for her dedicated service and offer this opportunity for members of the community to attend this celebration.

The School Council invites members of the school community to attend the retirement of **Kath Jekabsons**

WHEN Thursday February 26th 2009
WHERE Romsey Primary School PAC
TIME 6:30pm - 8:30pm 7:15pm Formal Proceedings commence
R.S.V.P Monday February 24th 2009

Please phone the **Romsey Primary School Office** on 54295099 if you would like to attend

We look forward to seeing you on the night

Joan Gibbs
Principal

Dr Jennifer Stillman
School Council President

Drainage Data Collection

Council has engaged contractors to collect data on Council's stormwater drainage pits and pipes. The data will help Council better manage and maintain the drainage network on behalf of the community.



The contractors have photo-identification and a letter of introduction as in some cases they will be required to enter private property. Data collection will commence in the Romsey area in mid January 2009 and will continue through the remainder of the Shire.

If you require further information please contact Anna Martin on 5421 9612.

Line Dancing

Every Monday morning at 9.30 at the Mechanic's Hall in Romsey. Beginners welcome. A great way to get fit while having fun!

Arts grants available to artists and organisations

Information sessions to be held in Kyneton & Snake Valley

Are you a regionally-based Victorian artist or arts organisation, or do you have an exciting arts project based in regional Victoria? If so, there is a whole range of Federal and State Government arts grants available to you.

Regional Arts Victoria will be hosting 2 information sessions in Central Victoria, 1 of these in conjunction with **Arts Victoria**, for prospective applicants at the following locations:

Date	Time	Venue
Mon Feb 2	5.30pm-7pm	Kyneton Town Hall, Richardson Room, cnr Mollison & Hutton Sts Kyneton
Wed Feb 4	7.30pm-9pm	Snake Valley Community Hall, Carngham/Linton Road Snake Valley

For information on sessions in Victoria or **interview requests**, please see the attached media release or contact **Verity Higgins**, Ballarat Regional Arts Development Officer, at Regional Arts Victoria on (03) 5320 5888 or vhiggins@rav.net.au.

Kind regards,
Joe.

Joe Toohey
Program Officer | Creative Communities Victoria | Regional Arts Victoria
a: PO Box 600 Port Melbourne VIC 3207 | ph: 03 9644 1800 | f: 03 9646 3832 | e: jtoohy@rav.net.au | w: www.rav.net.au

OPEN GARDEN AT 'CHINTIN GRANGE'

WEDNESDAY 25TH FEB
FROM 10.00AM

ENTRY BY GOLD COIN DONATION

PROCEEDS GO TO THE CANCER COUNCIL VICTORIA RELAY FOR LIFE

Refreshments Available

Plants for Sale

3054 Romsey Wallan Rd, CHINTIN

(10 Klms from the Romsey Hotel

Enquiries - 5429 6221



John Smith
0408 704 082

Your agent for Romsey, Lancefield and surrounding districts.

Service and professionalism is our motto

THINKING OF SELLING?

Residential and Rural Properties of all shapes and sizes are needed right now!

We have buyers currently looking to purchase in our area and we need more properties to sell.

For a free no-obligation market opinion of your property call us now!



www.connallys.com.au
ROMSEY 5429 6842

Romsey Art and Craft Market

Watch the Romsey Rag for details of the revamped market commencing in 2009.

New management

New ideas

World's Longest Lunch at Hanging Rock Friday 13 March

Tickets are on sale now for the World's Longest Lunch at Hanging Rock, an event which forms part of the Melbourne Food and Wine Festival presented by *The Age* (7 March – 23 March).

Approximately 200 diners are expected to take their seats at the long, elegantly laid table set beneath the shady gums of Hanging Rock reserve to enjoy a delicious three-course meal prepared by Quintessence chef, Alan Davison, served alongside a special selection of award winning Macedon Ranges wine and beer.

Local sponsors include, Hanging Rock Winery, Mt Charlie Winery, Holgate Brewhouse, Birthday Villa, Gisborne Peak Winery, Macedon Ranges Vignerons Association, Western Water, Buds and Stems, Tourism Macedon Ranges – who have all joined together to make this an unforgettable event.

Entertainment will be supplied by local musicians creating a festive atmosphere among the diners. You may even experience a visit from some of the local wildlife as they curiously investigate the activity.

Gather your friends and join in the fun to be held amid the scenic surrounds of Hanging Rock Reserve on Friday 13 March. Tickets are \$95 and can be purchased by calling 5421 9638.

And for those who want more than just one Long Lunch, there will be plenty of other amazing culinary adventures to be had across Melbourne and Victoria's regions, throughout the Melbourne Food and Wine Festival (7 March – 23 March, 2008). For full details visit: www.melbournefoodandwine.com.au



SAPPHIRE HAIRDRESSING

FOR ALL YOUR FAMILY'S HAIRDRESSING NEEDS

Now Open

- Style Cuts (male, female and children)-
- Fashion Colouring-
- Blowwaves-
- Special Occasion Styling-
- Perming-
- Chemical Straightening-

84 MAIN STREET, ROMSEY

Ph: 5429 5300

ROMSEY GOLF CLUB CHARITY DAY



PROCEEDS TO SUNDAY 8 FEBRUARY 2009

9.30AM HIT OFF - 4 PERSON AMBROSE

ENTRY FEE - \$40 PER TEAM (\$10pp)

18 HOLES AND MANY NOVELTY FUN EVENTS

Entries to: BERYL COLE - Ph: 54295411
ANDREW CLEMENT - Ph: 54296547

Entries close 6 February
(Entries also accepted on the day if field permits)

REFRESHMENTS AVAILABLE: On course & BBQ
lunch

Nearest the pin

Hole in one

From Daylesford and the Macedon Ranges Tourism Campaign Committee

MACEDON RANGES TO BENEFIT FROM \$7.3 MILLION TOURISM SPEND

Tourism operators in the towns and villages of Macedon Ranges shire are set to become big winners over the next three years, following an announcement by the Minister for Tourism and Major Events, Tim Holding, of a major marketing campaign to lure more big spending interstate visitors to regional Victoria. Under the strategy, more than \$16 million will be spent marketing every region in Victoria **including a \$7.3 million advertising campaign highlighting spa and wellness experiences in Daylesford and its surrounding villages.**

A further aspect of the Campaign is to develop an awareness of Victoria's Villages as a unique Tourism experience. A number of Villages in the Daylesford Macedon Ranges region will be featured to demonstrate the character, style and tourist potential of regional Victoria.

"Tourism is one of the most important industries for towns and cities right across Victoria, helping to boost local economies and creating thousands of jobs in local areas," Mr Holding said.

"Our research indicates that there is an opportunity for Victoria to capitalise on the increased demand from baby boomers for day spas, boutique Accommodation and outstanding food and wine experiences," he went on to say.

"Daylesford is the perfect vehicle through which to promote the diverse experiences we have in regional Victoria and attract more visitors from around Australia."

Speaking after the launch, Graham Jasper, Acting Chairman of the Daylesford Macedon Ranges Campaign Committee (the body working with Tourism Victoria to market tourism in this region), welcomed the vote of confidence shown in the region to Hero the next phase of the Jigsaw campaign.

"We are confident in the quality of the product in this region and look forward to working with our tourism operators and Tourism Victoria to strengthen the attractiveness of Victoria to the local, interstate and international visitors through a focus on our Region," he said. He pointed out that while Daylesford will be the "hero" town in the marketing campaign, all other tourism-oriented towns in the region will benefit – after all, they are all "just a stone's throw away" and tourists are sure to take advantage of the proximity of all our villages to visit, shop, stay and eat.

The campaign will commence in July 2009 and run for 3 years.

For further information contact Graham Jasper 0411 449 158 or email enquiries@dmrtourism.com.au

Daylesford and the Macedon Ranges Tourism Inc

COUNSELLING

AMANDA SUMMERS

Bach. AppSci (Psychology). ACRACS - Youth/Child. Grad.Dip Counselling
Qualified Member of the Australian Counselling Association

Services are provided on a one-to-one basis to adults, adolescents, and children. All sessions are confidential, and conducted in a caring, non-judgemental environment where you can discuss and explore issues that concern you. The pace of the process is tailored to suit you so that you remain comfortable with it at all times.

Together we skillfully identify new ways to:

- Maintain a healthy work and family balance
- Gain emotional calm and focus
- Build confidence and self-esteem
- Recognise unhelpful patterns
- Learn effective ways to deal with life stressors
- Feel more empowered in daily activities and decisions
- Address issues of Depression, Anxiety, and Personal development

Fees:

A one hour session costs \$25. Appointments can be made after hours and there are no waiting lists.

To make these positive changes in your life, please call me, Amanda Summers on
0411627204 or email summerscounselling@bigpond.com

Better access to health services in Lancefield and Romsey

With the opening of the Romsey Community Hub in 2008, Macedon Ranges Shire Council, Kyneton District Health Service (KDHS) and Cobaw Community Health Service are working together to provide better access to health care for the communities of Lancefield and Romsey. The three organisations now provide services at the same locations in the two towns. This makes it easier for people to take advantage of the full range of health and community services on offer in the Shire.

Cobaw has located its counselling and physiotherapy services at the Lancefield Neighbourhood House and the Romsey Community Hub. Physiotherapy appointments are available at Romsey on Tuesdays and in Lancefield by appointment. Counselling services are available by appointment at either site. Podiatry Clinics are offered at Romsey Community Hub twice a month. Call Cobaw on 5421 1666 to make an appointment for any of these services.

Cobaw's Early Childhood Intervention Service is co-located with the Council's Maternal and Child Health Service in Romsey. This service works with children who have disabilities or developmental delays and their families. To enquire about this service call 1300 363 514.

If you want to know about other services Cobaw Community Health Service offers in your town phone 5421 1666.

KDHS is also offering antenatal clinic at the Romsey Hub and the Lancefield Neighbourhood House. It is anticipated that antenatal classes will be available at Romsey soon. Appointments for the antenatal clinic are made by contacting KDHS on 5422 9900.

'MOVING ON'

TELL YOUR STORY &
GET IT PUBLISHED!

Romsey Writer's Group has received funding from the Macedon Ranges Shire Council to produce a book written by community members on the theme 'Moving On'. Poems and short stories will be included.

Some topics you might consider writing on are:

- ✦ bereavement
- ✦ physical or mental illness
- ✦ divorce
- ✦ losing a child or sibling
- ✦ accidents
- ✦ natural disasters
- ✦ drug/alcohol abuse
- ✦ losing a job
- ✦ losing a home
- ✦ retirement
- ✦ caring for a child or loved one with special needs
- ✦ pets and their ability to change lives
- ✦ domestic violence
- ✦ financial difficulties
- ✦ winning the lottery
- ✦ having children
- ✦ changing careers
- ✦ cross-cultural relationships
- ✦ bureaucratic bungles

- ✦ wills
- ✦ sea change
- ✦ tree change
- ✦ near death experience
- ✦ getting lost
- ✦ moving house
- ✦ changing countries
- ✦ being in a car accident
- ✦ witnessing something terrible
- ✦ confronting your fears

These are only some suggestions to give people an idea of the sorts of stories and poems we are seeking. Feel free to choose a different issue/topic that relates to the theme.

We are happy to work with people who have a story to tell but are unable to write it down.

SUBMISSION GUIDELINES

The following criteria will apply for any works accepted for publication:

- ✦ Poems must be no more than 2 pages in length.
- ✦ Short Stories must be 500 to 3000 words.
- ✦ Works must not contain swearing or inappropriate language.
- ✦ Works must fit into the theme of 'Moving On'.
- ✦ No inappropriate or offensive content will be accepted.
- ✦ Romsey Writer's Group reserves the right to refuse publication of works considered inappropriate or unacceptable.

✦ All submissions should include address and phone number for contact.

✦ Materials should be typed and printed, and submitted with a disc containing the piece/pieces. Materials can be dropped at the Romsey Neighbourhood House (Shire Offices, Main street Romsey) or emailed to romseycommunityhouse@yahoo.com.au. Alternatively, they can be posted to Romsey Neighbourhood House PO Box 418 Romsey VIC 3434.

✦ All materials MUST BE SUBMITTED BY 28th February 2009.

✦ More than one piece of work may be submitted.

✦ This project is subject to funding however, in the event this is unsuccessful, we will publish a selection of stories in the Romsey Rag. This is a not-for-profit project and NO PAYMENT is provided for works submitted.

If you are unable to write your story down, one of our writers will be happy to work with you to get it down on paper. For assistance, phone Dee White on 54 285 365 or Robyn Moore on 54 29 6445 or 0412 275 152.

So get writing, and send your story or poem in to us. We'd love to see it – and check your Romsey Rag next month for more information.

Have your say on the Strategic Direction of our Economy

Macedon Ranges Shire Council is developing its 10-year Economic Development Strategy and the first step in this process is to get feedback from the business community across the Shire.



A survey is being distributed to local business owners, asking them to provide Council with information about their businesses to assist with the development of new business strategies.

The information will allow Council to understand more precisely the make up of home-based businesses as opposed to those operating in business premises; to understand employment trends, training needs, infrastructure demand and also to understand the markets that provide the most opportunity for local job creation.

The survey will be distributed to local businesses and will also be available on Council's website. To download a copy, log-on to www.macedon-ranges.vic.gov.au and click on the 'For Your Comment' link on the noticeboard.

Completed surveys should be returned by Friday, 6 February 2009, however late submissions will be accepted until Friday 13 February 2009.

Data provided will be held in the strictest confidence and will only be used for the purposes of developing a strategy to support the business community.

For further information or to request a copy of the survey contact Lyn Newberry on 5421 9616 or email l.newberry@macedon-ranges.vic.gov.au

CHESS

Property Consultants



102 Main St, Romsey Vic 3434
P: 03 5429 5544
F: 03 5429 6699
info@chessproperty.com .au



Tracey Bertoni
Sales Consultant



Elizabeth Dormontt
Director
Licenced Real Estate Agent



Karen Sawyer
Property & Admin Manager

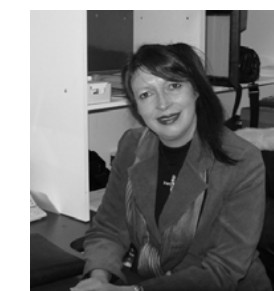
Branch Office:

22 O'Shanassy St,
SUNBURY VIC 3429

Vicki: 0409 356614

Tony: 0418 516670

**Professional, Friendly Service
& Advice !
Specialising in Sales &
Property Management in
Romsey, Lancefield
& Surrounding Areas.
FREE No-Obligation Sale &
Rent Appraisals !!**



Deborah Alford-Kerr
Sales Consultant

GREAT GRAND TOUR LAUNCHED

The 2009 **GREAT** Macedon Ranges Grand Tour was launched last week in Gisborne. President of the organising committee for the 2009 event, Andrew Fletcher explained at the launch the interesting name. "The major sponsor of our event is the Gisborne Region Events Activities & Tourism Association, (GREAT) which is responsible for an extraordinary amount of good work in the Gisborne region." "The GREAT Association runs the famous Gisborne Sunday Market, which is reputed to be the second largest in Victoria." "Apart from surplus funds going to local community groups we aim to stimulate return visits to the region as well as retail and accommodation turnover. The prospect of dropping 300-400 people into the region on Saturday 4 April should account for some significant economic advantage," Fletcher stated, "Anecdotally these folks are spenders. On previous tours individual retailers have reported significant expenditure by participants."

The Grand Tour is an opportunity for lovers of old cars and good food and wine to combine both interests. One of the sponsors of the event is Hanging Rock Winery, reputedly one the leading sparkling wine producers in the area. The event is open to owners of cars and motorcycles 25 years or older to participate in a fully catered tour of the Macedon Ranges. The length of the tour is about 240 kilometres with two routes, one for older vehicles and the other for more modern classics.

The organisers expect in excess of 150 vehicles to participate in the 2009 Grand Tour. Run on the last day of daylight saving, Saturday 4 April, participants will be treated to the full range of experiences that the region has to offer; Farmer's Markets, Wineries, Cafes, beautiful Gardens, spectacular countryside and smooth, traffic free roads.



Andrew Fletcher with his Rover P5B

The aim of the Grand Tour organisers is to make the event a pleasant drive in the country with the added benefits of local knowledge and great company amongst a diverse collection of old cars. The entry fee includes a substantial Morning Tea, Lunch and Dinner. For those with more time there are a variety of accommodation packages including Dinner on the Friday night before the event, featuring a well known motoring identity as guest speaker.

More information is available on the web www.macedonrangesgrandtour.com.au, email macedon.grandtour@gmail.com or phone 03 5428 5197. The organisers are also planning a "Show and Shine" event for the following day Sunday 5 April which would be held in conjunction with and adjacent to The Olde Time Market Site in Gisborne.

ROMSEY LICENSED POST OFFICE

OFFERS THE FOLLOWING SERVICES:

BILL PAYING FAX SERVICE PHOTOCOPYING LAMINATING
OPTUS PRE-PAID PHONE CARDS
TELSTRA PHONEAWAY
TELSTRA PRE-PAID PHONE CARDS
PASSPORT APPLICATIONS
OFFICE STATIONERY
CITILINK DAY PASSES
COMPUTER DISKS
COMMONWEALTH, NATIONAL & GIROPOST BANKING



Grant to honor Boer War volunteers

Colonial soldiers who served in the Boer War will be honoured at Romsey and Lancefield following the announcement of a \$1597 grant today by member for McEwen Fran Bailey.

Fran said funding for the erection of two plaques had been secured for the Romsey-Lancefield sub-branch of the RSL. "The local sub-branch put together an excellent submission to honour the district's first volunteer soldiers to serve overseas," Fran said.

"The Boer War saw young Australians enlist to support British forces in South Africa and has been immortalised in our nation's history by the film Breaker Morant."

Fran said the \$1597 grant had been made under the Saluting Their Service program.

"Saluting Their Service grants help our local communities honour the sacrifice and services of servicemen and women in defending democracy," Fran said.

"They also help promote appreciation and understanding for the sacrifices made by servicemen and women in shaping our nation."

Tuning into Kids **Emotionally Intelligent Parenting**

This is a program for parents with children from pre-school to early primary years.

- **The program is about assisting children to understand and regulate their emotions and thus develop emotional competence.**
- **We believe parents know their own child best, so the program will provide a range of strategies and approaches that will assist parents foster the child's individual needs and character within the family.**
- **How to use emotional coaching when solving problems with children's behaviors.**

Time: 9.30am - 11.30am

Date: 27th February – 3rd April (Friday for 6 weeks)

**Place: Romsey Community Hub
98 Main Street, ROMSEY.**

Cost: Nil

Child Care: Free on Site

Course Facilitators

Anne Hawkins - Counsellor and Early Childhood Specialist

Sue Robbie - Social Worker

**Bookings are essential – to register please contact Anne or Sue
Cobaw Community Health - 54211666**



Romsey Uniting Church

Pohlman Street, Romsey. 3434

Minister: Rev. Dr Avril Hannah-Jones: 5429 5351 Mobile: 0408 380 962

Church Council Chairperson: Noel Shaw - 5429 5509
Secretary: Jeni Clampit - 5429 5480



**You are most welcome to come to the Romsey Uniting Church Services
and share in fellowship and worship...**

In December the Romsey congregation members received the last edition of the Romsey Uniting Church monthly magazine "The Clarion". Commencing this year the first edition of "The Link" will be published, linking four Uniting Church congregations – namely Lancefield, Romsey, Riddells Creek and Mt.Macedon

This monthly magazine will encompass information from the four churches. The first edition will have information about the history of each church. We all look forward to this publication.

Ecclesiastes 3: 1

There is a time for everything, and a season for every activity under heaven.

A man who had worked hard all his life was asked what he would do in retirement.

"For the first month," he said, "I'll sit on the porch in my rocking chair." "And then what?"

"Then I'll start rocking – slowly," he answered.

Why do we find it so hard to slow down? Most of us aren't human beings any more, we are human *doings*. We rush around madly from one thing to the next. Achievement is all that counts.

We show each other full diaries, shake our heads and say we wish we had more spare time, but secretly we enjoy the thought that the world cannot get along without us. That if we did not do things, the earth would grind to a halt.

That we are indispensable.

But this constant activity leaves us little time to look at who we are or where we are going. No time to think.

A wise writer in the Bible said that there's a time for eve-

rything under the sun – and I reckon that includes a time to release ourselves, let go and recharge our batteries.

"Be still and know that I am God," the Psalmist advises. It means 'relax and know...'

The problem with our frenetic activity is that it crowds God out.

We think our busyness is on his behalf, but really it pushes him to the edge of our lives.

Take time out today, relax and give God a chance to make himself felt.

*Lord, when life is fast
and I am getting breathless,
help me to feel your presence
in the pressures.*

(Written by Eddie Askew. (Deceased)
Used by permission - Leprosy Mission International.)

Church Services during February, 2009		
1 st	9am.	Worship Service conducted by Guest Preacher
8 th	9am	Worship and Communion Service conducted by Rev. Dr. Avril Hannah-Jones
15 th	9am	Worship service conducted by the Worship Team
22 nd	9am.	Worship Service conducted by Rev. Dr. Avril Hannah-Jones

Guitar Lessons

Beginner and Intermediate
Ages 7 and up
After school hours
Popular music
Sight reading



Call **Kieran** on
5429 5622 or
0402 809 077
AMEB Qualifications



The incorporation of The Greater Romsey All Abilities Adventure Playground is scheduled for 7pm Tuesday 10th of February at the Romsey Community Hub. Our aim is to provide Romsey and the surrounding areas with an adventure playground that will suit children of all ages and abilities. We are encouraging people with great ideas and motivation to come along and join us in creating something wonderful that our children can be proud of, something that they will enjoy for not just 5 minutes but for a life time. This is your opportunity to get involved and have a say in how and where this all happens. For more information please contact Joanne Cooper on 0409 389 697.

Henry McLaughlin

Macedon ranges East Ward.

On behalf of myself and my fellow \East Ward councillors welcome to 2009 and thank you for your support during the recent council election. We look forward to serving you over the next four years and working hand in hand with you towards making the Macedon ranges, and more specifically our East Ward, the best it can.

My objectives:

During my term there are four main areas I am going to address. I will both keep you posted on their development and seek your assistance and support. These four areas are briefly summarised below:

Implement ODPs

An Outline Development Plan is the strategic planning framework for the future and will ensure appropriate and sustainable development of residential, commercial, industrial and recreational land. The implementation of the ODP is fundamental to progress and will provide a clear direction for the future.

Local High School:

Currently children are being bussed to high schools in surrounding towns 30 minutes away. With our growing population this must be addressed.

Local Public transport:

The greatest argument we have for increasing our local public transport service is to utilise what we already have. If we don't use it there is little chance of it being improved. Bus timetables are available locally including the Romsey Hub. You may be surprised at how convenient and cost effective the existing services are. Improved Sports & recreation facilities.

As we all work harder we need facilities to help us relax and unwind, be it a casual stroll or a vigorous session at a local stadium. Our existing sports facilities are varied and require attention. We have some great local teams who need suitable facilities and support.

Bushfires

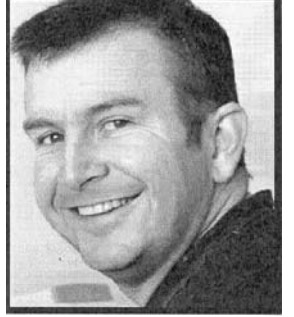
On Wednesday January 22nd we had two local outbreaks of fire in Woodend and Malmsbury, both of which were promptly contained. This comes as a blunt reminder of how dangerous the current hot conditions can be, how quickly a situation can arise and the importance of having a fire plan. In the event of local fires it is advisable to tune to local ABC radio (91.1FM or 774FM) where you will be kept informed of fires and the location of relief centres. Alternatively you can phone the bushfire information line 1800 240 667.

Whilst these two fires were being fought, I attended the Gisborne council offices and was amazed at the military-like efficiency in which council staff converted the Chambers into a Municipal Emergency Co-ordination centre (MECC) from where the fire fighting operations were co-ordinated. I would like to congratulate the council staff and emergency services involved for their efforts and a tremendous outcome. It is a great relief to know that in such situations we have this high standard of backing to rely on.

\$947K Federal Funding

The federal government recently allocated \$250 million to local councils to stimulate local growth and economic activity with the Macedon ranges receiving \$947,000.

Throughout the Shire 44 projects were selected for this funding and all works will be completed by 30 September 2009. The details of individual projects can be obtained from the council.




\$3m+ Romsey Sports precinct. In addition to the funding above, the federal government has set aside \$50million for strategic projects requiring a minimum federal contribution of \$2 million. There are strict criteria for eligibility and every local council can submit only one application. Our council shortlisted a number of potential projects with the Romsey Sports precinct being selected. This is a \$3m+ project that would be a great boost for the local community. Competition between councils for this funding will be fierce and we should know in the near future if we have been successful. The Romsey Sports Precinct project includes: A quality sports ground including an eight lane athletics track, soccer pitch, cricket ground and football ground. A colorbond club facility including adequate storage for sports equipment, meeting space, kitchen, change and toilet areas. Designated parking, footpaths, safe road crossing and improved link to Romsey Park facilities.

Melbourne-Lancefield Road

Your local ward councillors recently met with representatives from VicRoads regarding the Melbourne-Lancefield Road to see what can be done about upgrading this road and improving safety. VicRoads has agreed to perform a critical analysis on the road and will report back with its findings shortly. In the meantime, as always, please take care whilst travelling on our roads.

Henry McLaughlin
Ph: 0400 028 507
CrHenryMcLaughlin@bigpond.com

Cr Joan Donovan: Ph: 0400 034 956
CrJOanDonovan@bigpond.co
Cr Joe Morabito: Ph: 0400 025 455
CrJOeMorabito@bigpond.com



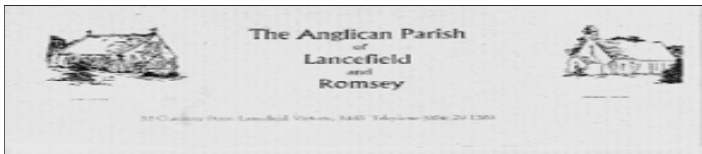
Dance Station

PRINCIPAL—*Natalie Philippe M.S.F.D*

Offering Classes In:

- Jazz
- Tap
- Classical limited placements
- Ballet High Street, Lancefield.

2009 Enrolment Enquiries: (03) 54293769 or 0400010122



VIEW FROM THE VICARAGE.

Dear Friends

Happy New Year to the towns of Lancefield and Romsey! At this time of the year, many New Year's resolutions have been made and dare I say it – broken. Whilst we plan to do something new, not always does it come off but still there is another 300 plus days to make the “planned” changes to your life.

However, whilst some things change – some things stay the same. Our services this year will stay the same in terms of time but there will be plenty more around Sunday in order to connect with our community a lot more.

Please look down at the list of activities below in order to find something that suits you and your family. In other words, we run things for those from 9 months to 90+ in years. We run activities for all ages almost and I hope to connect with people on a personal level this year as well.

We also do weddings, baptisms and funerals if interested as well as run the community care bank from our church hall (thank you to all who have donated towards this vital ministry to our community).

If you want to talk about any of our activities or about your walk with God or anything else, then please ring me on 0417-679-682.

That's the opening view from the Vicarage in 2009, a year where I hope and pray we

“Seek the Divine in 2009.”

Rev. Leroy Coote
Vicar
The Anglican Parish of Lancefield and Romsey.

Special Events

Our next Sunday @ Six on Sunday 15th February 2009 with dinner at 5:30pm and a short service starting at 6pm with loud, lively music. **The topic next month is: What is love? Does it last longer than Valentine's Day?

**“Does anybody have those unfinished craft projects sitting around?

Don't have a time or place to finish them?
Then have we got both for you.

The “Unfinished Symphony Group” is starting soon. Details are as follows:

Date: Saturday 21st February 2009.

Time: 1pm – 3pm

For sale:

1 QS timber base waterbed \$75; 1 Bunkers bunk bed \$50; 2 sewing machines \$50 ea.; 1 Simpson under bench dishwasher \$100; 1 Rover rancher 12HP ride-on \$500 - 5427 0626 Stuart or Jan

Cost: Gold Coin Donation.
Bring along your unfinished “symphony” and friends.
For further details, please contact Mrs Jenelle Coote on 5429 -1680.”

****Mystery Box night – Friday 13th March 2009. Time:**
7:30pm

Place: Lancefield Anglican Church Hall.

Cost: Gold coin donation

Guest Auctioneer.

We would love to see you at this exciting new event.

****Four week course commencing Tuesday 10th March 2009 from 7:30pm – 9:30pm**

“How to drugproof your kids or Making good parents better.”

Where: Lancefield Anglican Church Hall

Cost: \$20.00 (to cover cost of material).

This course will make parenting your child a lot easier.
You will need to enrol by Monday 2nd March and if you wish to enrol, please contact the course convenor – Rev. Leroy Coote on 0417-679-682.

General Information

1. You are cordially invited to any of our **Services:** 9:00am at Romsey located at 77 Main Street, Romsey and 10:30am (with children's program) at Lancefield located at 33 Chauncey St., Lancefield.
All our Services are “Worshipful, Anglican and Relevant.”

2. Our Church **Youth Group** meets from 5pm – 7pm every Sunday Evening – now in two locations. (commencing 8th February 2009)
Grades 5 and 6 meets in the Lancefield Anglican Church Hall.
Years 7 and up meets in the Lancefield Uniting Church Hall.
Cost \$4.00 to cover dinner and future activities. Anyone in Grades 5 and up at school is welcome to come along and see what fun activities we do. All our leaders have up to date “Working with Children's Checks”.

For further details on any of our activities, please contact Rev. Leroy Coote on 0417-679-682.

Notice to Contributors:

When submitting photos for inclusion in the Romsey Rag, please ensure that anyone appearing in the photograph has given consent for it to be published. A written statement to this effect is required at the time of submitting your copy (if copy is sent by email, include this statement in your email). There are many legal issues surrounding the unauthorised publication of photographs and we will not publish photographs from now on unless such authority is given.

The Editors

Romsey Red Cross Unit

The International Red Cross is best known for international work in disaster areas, poverty stricken nations and war zones.

The Australian Red Cross works within Australian disaster areas like bushfires and many other unfortunate happenings of a serious nature.

The Romsey red Cross Unit helps out in local disasters. For example, in case of a house fire where its occupants are left with next to nothing, we provide food, blankets, clothing and needs to survive. **Volunteers do all the work.** In the case of bushfires, where people have moved to safe assembly areas, Red Cross will be there to help. **Volunteers do all the work.**

People have been **warned, warned** in newspapers, on radio and on television, and **warned** again and again by the C.F.A. that the country is tinder dry, with grasses and forest ready to burn. Members of the C.F.A. and the S.E.S. train every week to be ready. Both need more active members. The police are also ready to deal with fires in evacuating people in danger zones. The police would be extremely busy getting people out of danger and into the safe assembly areas.

It is there, in the assembly areas that the Red Cross plays a major role. We collect the details of all people brought into these safe zones. **Why, may you ask?** The police, in evacuating people, have no time to make lists of who goes where. It can happen, and often does, that members of a family finish up in different collection zones. The Red Cross volunteers collect all information from everyone who has been evacuated to a safe zone. The documents are speedily dispatched to headquarters where they are collated. If someone rings up trying to trace a family member, Headquarters can then promptly advise where to find the missing family member(s). Red Cross also provides catering for personnel involved in dealing with disasters such as bushfires.

Right now the Romsey Unit does not have enough trained members to handle the registration and catering functions for such emergencies. The current fire situation may be so bad that we need to call on trained Red Cross members from other locations to assist. But they, too, may be flat out dealing with emergencies in their own areas.

To be able to do this important work

WE NEED MEMBERS. THE ROMSEY UNIT IS VERY SHORT OF MEMBERS.

What is involved in being a member?

- Attendance at local unit meetings (No meetings are held during school holidays).
- Receive training in registration, catering and safety.
- We do not have a first Aid section yet.

Enquiries:

Come to our meetings on the 2nd Tuesday of each month, 1.30-3.00pm, in the Romsey Hub (except during school holidays and December /January period).

Leave a message: With the Romsey Community House during morning hours or phone the President on 5429 5502.

RED CROSS WILL NEED YOU SOON

Traditional Goju Ryu Karate

Children & Adult beginner classes for self protection, fitness, discipline and confidence.

Tai Chi Chuan

Gentle exercise & meditation for all ages offering mind & body harmony. Beginners Welcome!

Private Tuition Available

Homestyle Cooking Class

Theme : Chinese Vegetarian March
22nd 11am

\$65- Lunch inclusive Fun & informative

Recipes easily adapted to include meat

Bookings Essential



**WU LIN RETREAT
LANCEFIELD**

Phone: 54292122

Mob: 0417 350 398

Email :

james@jamesumarac.com

Website:

www.wulinretreat.com

Oriental Barefoot Doctors Clinic

by appointment only

Traditional Chinese Medicine

Incorporating massage, acupuncture, moxibustion and cupping offering a holistic treatment for improved vitality, many health related Issues, chronic & acute injuries.

Natural Non Surgical Facelift

A very gentle affective treatment with an immediate result.

Money back guarantee

**GIFT VOUCHERS
AVAILABLE
ORDER BY PHONE**

Great present for a loved one!

Landcare Email Bulletin: February-April 2009**Books****Moths of Victoria – Part 1 Silk Moths and Allies - Bombycoidea**

Details: first publication in a series of 12 by Landcare volunteer, Peter Marriott. It includes an amazing collection of colour photographs contained within a beautifully crafted layout. Both the book and CD provide an excellent and novel reference for field identification suitable for scientists and student alike; a great addition to the available literature addressing the natural history of Victoria.

Cost: \$10 (Entomological Society of Victoria members) or \$12 non members.

How to order: vicmoth@entsocvic.org.au

Of particular interest and relevance to residents of the Macedon Ranges Shire is the local content of Moths of Victoria Part 1. A number of moths were photographed at Riddells Creek, a location at which Peter regularly conducts field work.

"I am very happy with the result. It is exciting to see the material come together for the first time anywhere and I hope we can get it to all the people who will find it useful."

- Peter Marriott

Macedon Range Flora: A photographic guide to the flora of Barrm Birrm, Riddells Creek

About three years ago Riddells Creek Landcare began a major project of documenting the flora of Barrm Birrm (the bushland overlooking Riddells Creek) with the intention of producing a book to help people identify our local flora (and Macedon Range flora more generally). The book is now complete and it contains over 200 species of native plants, all described and all photographed (by locals), in this new field identification guide. The book includes 8 eucalyptus species, 14 wattle species, 27 orchid species, 14 lily species, and much more. Many of these plants are extremely beautiful, some very rare (one previously undiscovered and detailed for the first time in this book), and some just peculiar. There are carnivorous plants, plants we can eat, plants that whack insects on the head and Victoria's and Australia's floral emblems. The book was launched earlier this year.

Available: from Riddells Creek Landcare for \$15. For an order form and more details go to: <http://www.riddellscreeklndcare.org.au/>

Resources**Landcare Marquee**

Two 'Landcare' branded marquees are available for use across Victoria for occasions such as field days, events, or other planned outside activities hosted by primary industry and Landcare Groups. The Victorian Landcare Network (VLN) manages bookings for the Landcare marquee.

Contact details: for marquee bookings in the southern part of Victoria, including the PPW region, are Sarah Van Stokrom (Bass Coast Landcare Network) on mob: 0417 392 745 or email: s.vanstokrom@basscoast.vic.gov.au

John Robinson
Upper Maribyrnong CatchmentCare Coordinator—Port Phillip & Westernport Catchment Management Authority

Phone: (61 3) 9218 5611 Mobile: 0417 518 913 Fax: (61 3) 9218 5600 Email:

john.robinson@ppwcm.vic.gov.au

Postal address: PO Box 2435, Sunbury, VIC 3429, Australia

Based at: PPWCMA satellite office Level 1, 36 Macedon Street, Sunbury, Victoria, Australia

EMAIL BROADCAST - DECEMBER 2008

Dear Romsey Rag,

Welcome to the December issue of the Email Broadcast. We would like to welcome Deborah Varney to the Environmental Services team. Deborah will be assisting Lachlan Milne in the preparation and distribution of the email broadcasts.

Booklet – Weeds of Central Victoria

A new edition of the booklet *Your Guide to the Weeds of Central Victoria* has been developed in partnership with the Mt Alexander and Mitchell Shires. The booklet has been printed as part of the 'Tackling Weeds on Private Land' program which was funded by Council and the Department of Primary Industry.

For a copy of the booklet please visit your local Macedon Ranges Shire Council Customer Service Centre or contact Lachlan Milne directly on 5421 9659.

Ecological Processes Discussion Paper

The Victoria Naturally Alliance has released a discussion paper titled *Ecological Processes in Victoria: Policy Priorities for Sustaining Biodiversity*. The paper explores the policy directions needed for supporting biodiversity processes and natural systems in Victoria.

To view this discussion paper visit the Victoria Naturally website

www.victorianaturally.org.au

Caring for our Country—Business Plan 2009-10

The Caring for our Country 2009-10 Business Plan was launched on Friday 28 November. The Australian Government is now calling for funding proposals that will contribute to targets outlined in the plan. The Australian Government will invest \$2.25 billion in the first five years of the program for projects that contribute to strategic outcomes across the six national priority areas:

1. The national reserve system
2. Biodiversity and natural icons
3. Coastal environments and critical aquatic habitats
4. Sustainable farm practices
5. Natural resource management in northern and remote Australia
6. Community skills, knowledge and engagement.

Funding proposals should be based on strong partnerships with government agencies and CMAs, councils, indigenous groups, industry bodies, land managers, Landcare groups and other community groups and non-government organisations.

To view the Business Plan visit <http://www.nrm.gov.au/publications/books/business-plan.html>

For further information regarding this document contact Lachlan Milne on 5421 9659.

Roadside Weed Grants—First Round

The first round of the Building Capacity of Local Government to Respond to Pests program that is supporting the management of declared pest plants and animals on local roads has received a high level of interests, with 51 applications from 48 councils across the state. All councils that submitted applications on time will be receiving some level of funding to support efforts that address priorities and criteria of the program. Round two is expected to be announced in early 2009.

For further information on the program visit <http://www.dpi.vic.gov.au/weeds> under 'Future Farming initiative'

National Serrated Tussock Management Manual

The National Serrated Tussock Best Practice Management Manual was launched on Friday 28 November. The manual brings together information on serrated tussock identification, prevention, existing control options and case studies. Content was sourced from published information, existing research, technical expert reviews and experience from individuals and organisations currently managing serrated tussock.

Free copies of the manual are available by contacting the Department of Primary Industries on

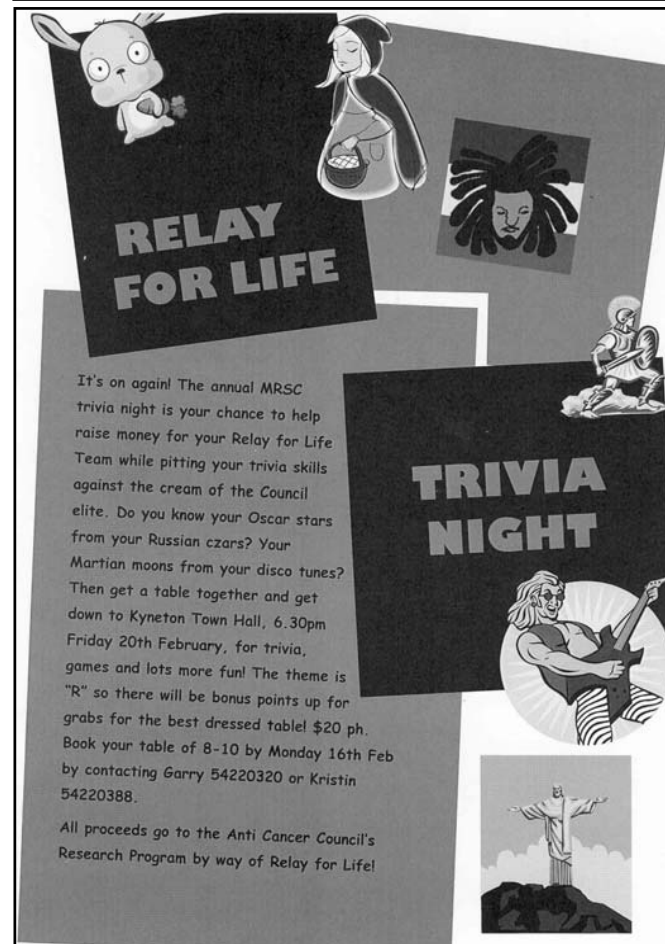
136 186 or by visiting <http://www.serratedtussock.vic.gov.au>

Lachlan Milne

Environment Resource Officer
Macedon Ranges Shire Council
PO Box 151, Kyneton, Victoria, 3444
Ph (03) 5421 9659
Mobile 0407 227 317
Email: lachlanm@macedon-ranges.vic.gov.au

Deborah Varney

Environmental Services Administration Officer
Macedon Ranges Shire Council





RELAY FOR LIFE

TRIVIA NIGHT

It's on again! The annual MRSC trivia night is your chance to help raise money for your Relay for Life Team while pitting your trivia skills against the cream of the Council elite. Do you know your Oscar stars from your Russian czars? Your Martian moons from your disco tunes? Then get a table together and get down to Kyneton Town Hall, 6.30pm Friday 20th February, for trivia, games and lots more fun! The theme is "R" so there will be bonus points up for grabs for the best dressed table! \$20 ph. Book your table of 8-10 by Monday 16th Feb by contacting Garry 54220320 or Kristin 54220388.

All proceeds go to the Anti Cancer Council's Research Program by way of Relay for Life!

Help Support the 2009 Relay For Life and have a very pleasant Sunday Afternoon!!

On Sunday 8th February, 2009
Old Time Dance Band
"BITS & PIECES"
will be playing at

LANCEFIELD MECHANICS HALL

DANCING from 1pm to 5pm

AFTERNOON TEA WILL BE SERVED

If you are not up to dancing the music is great to listen to and the energetic dancers are very entertaining to watch

Bits & Pieces have played at several fundraising functions for the Relay For Life and they have now decided to go one step further and form their very own walking team know as the "MUSIOS"

All funds raised will go to the Relay For Life

Tickets are available at the Door - \$10 per person
For further details or bookings contact Bill Badger

TEAM 000
Afternoon Tea & Raffle Draw
Our last fundraising hoorah for the Relay year !

Saturday 7th February, 2009

Romsey Ambulance Station
Main Road, Romsey

1.00pm to 4.00pm

Gold Coin donation

Fantastic door Prizes, yummy food
& of course, fantastic company !



Phoenix Greeting Cards &
Kabuki Homewares available for sale.

Major Raffle draw at 3.00pm

More information : Kate ph 0408510475



Lancefield

MOTORCYCLE POKER RUN

RIDE FOR ELIZA 2009

For further details refer to website

www.lancefieldpokerrun.com

- ☛ Sunday 22nd February, 2009
- ☛ Start & Finish Lancefield Old Mack's Hotel
- ☛ Check-In, Registration & Breakfast from 8:00am
- ☛ Take Off 10:00am, Lunch Stop & Refreshments
- ☛ Prizes for Best Poker Hands and Novelty Prizes
- ☛ Pre-register on Website \$25, or Register on Day \$30
- ☛ All Pre-registrations Entered in a Lucky Prize Draw

Proceeds Raised Donated To
The Cancer Council Relay For Life

The Cancer Council Victoria

enquiries Peter mob: 0417 596 621 Kristine mob: 0432 181 136
or email to lancefieldpokerrun@hotmail.com